

Key

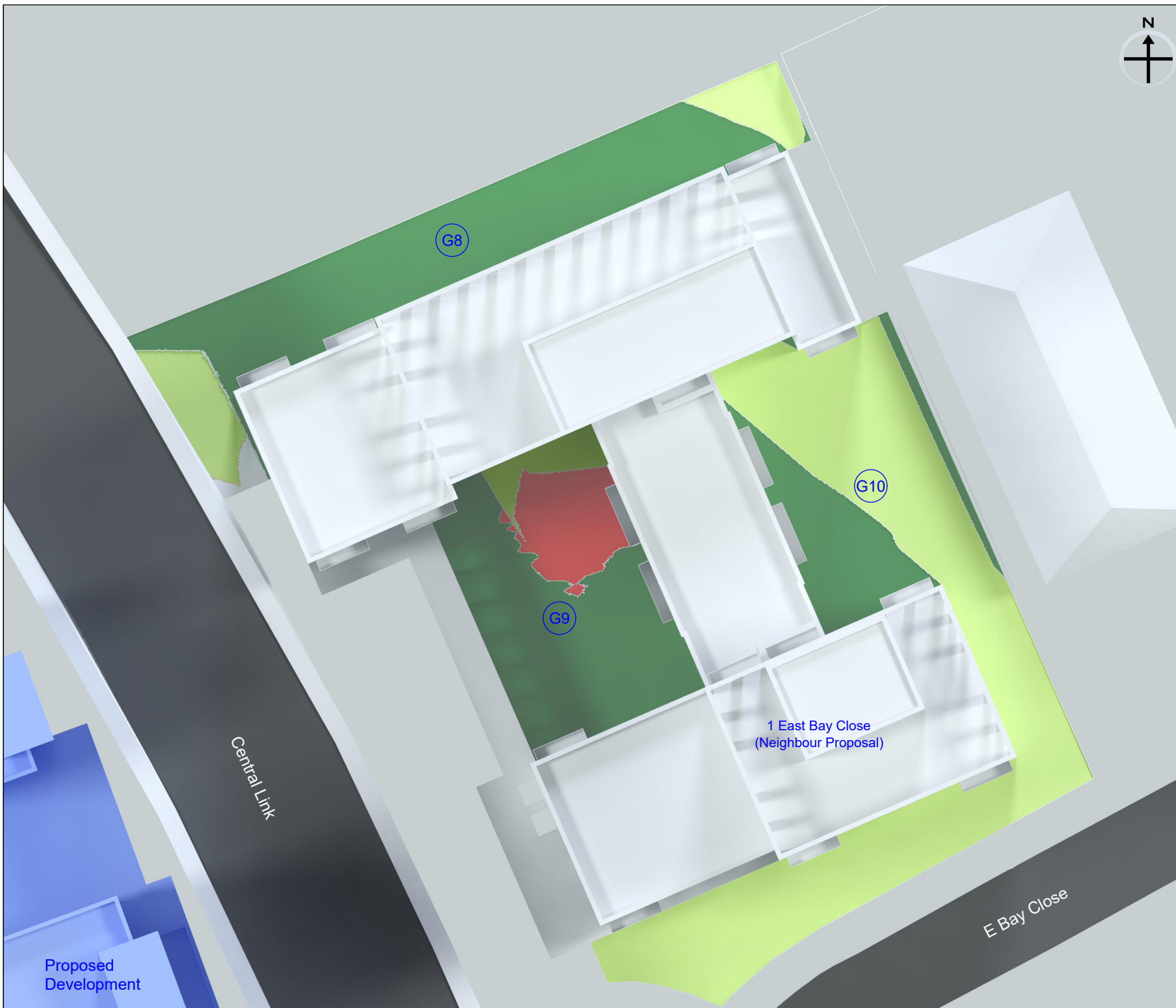
-  Receives under two hours sunlight on 21st March before and after the development.
-  Receives under two hours sunlight on 21st March before the development; but will receive at least two hours sunlight on 21st March after the development (light improved).
-  Receives at least two hours sunlight on 21st March before the development; but will receive under two hours sunlight after the development (light loss).
-  Receives at least two hours sunlight on 21st March before and after the development.
-  Neighbouring Gardens and Amenity Areas

Drawing Title: Appendix 3 - Overshadowing to Gardens and Open Spaces



RIGHT OF LIGHT CONSULTING
Chartered Surveyors

Right of Light Consulting
Burley House
15 - 17 High Street
Rayleigh
Essex
SS6 7EW
TEL 0800 197 4836
E-MAIL enquiries@right-of-light.co.uk
WEBSITE www.right-of-light.co.uk



Key

-  Receives under two hours sunlight on 21st March before and after the development.
-  Receives under two hours sunlight on 21st March before the development; but will receive at least two hours sunlight on 21st March after the development (light improved).
-  Receives at least two hours sunlight on 21st March before the development; but will receive under two hours sunlight after the development (light loss).
-  Receives at least two hours sunlight on 21st March before and after the development.
-  Neighbouring Gardens and Amenity Areas

Drawing Title: Appendix 3 - Overshadowing to Gardens and Open Spaces



RIGHT OF LIGHT CONSULTING
Chartered Surveyors

Right of Light Consulting
Burley House
15 - 17 High Street
Rayleigh
Essex
SS6 7EW
TEL 0800 197 4836
E-MAIL enquiries@right-of-light.co.uk
WEBSITE www.right-of-light.co.uk



1 East Bay Close
(Neighbour Proposal)

Proposed
Development

Cardiff Theatrical
Services Ltd

Central Link

E Bay Close

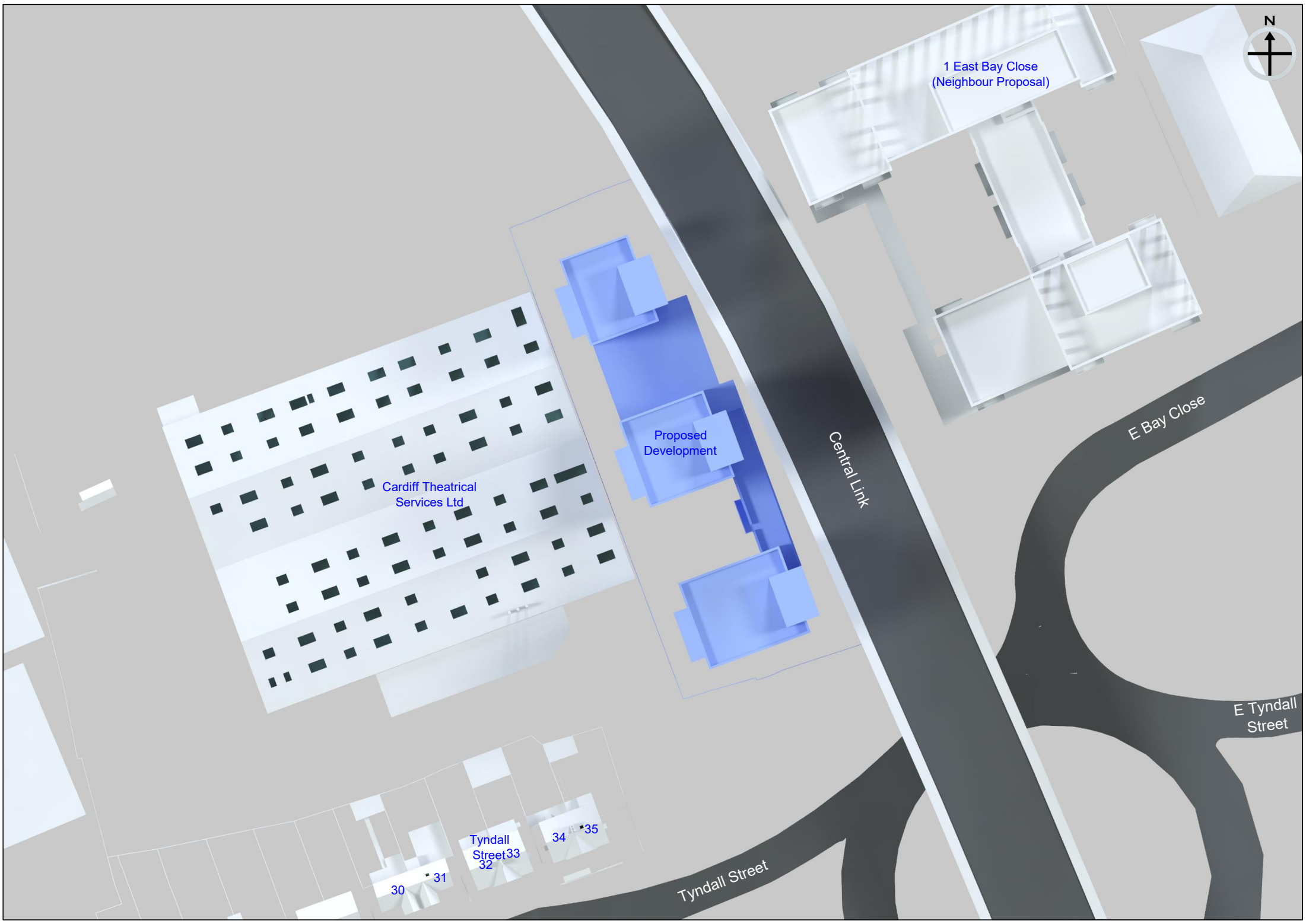
E Tyndall
Street

Tyndall Street

Tyndall
Street
32

34 35

30 31





Cardiff Theatrical
Services Ltd

Proposed
Development

1 East Bay Close
(Neighbour Proposal)

30

31

32

Tyndall 33
Street

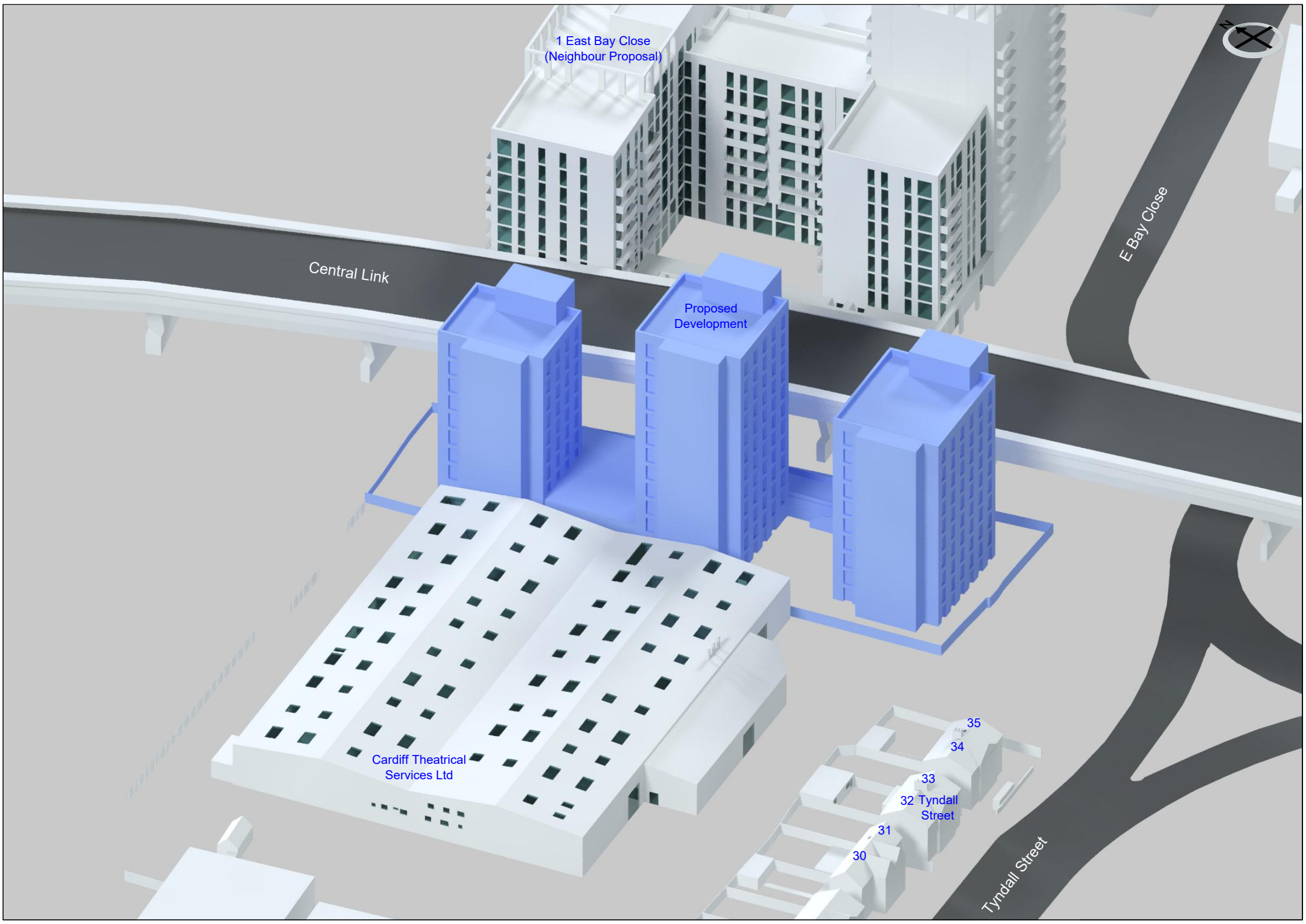
34

35

Tyndall Street

Central Link

E Bay Close



1 East Bay Close
(Neighbour Proposal)

Central Link

Proposed
Development

E Bay Close

Cardiff Theatrical
Services Ltd

30

31

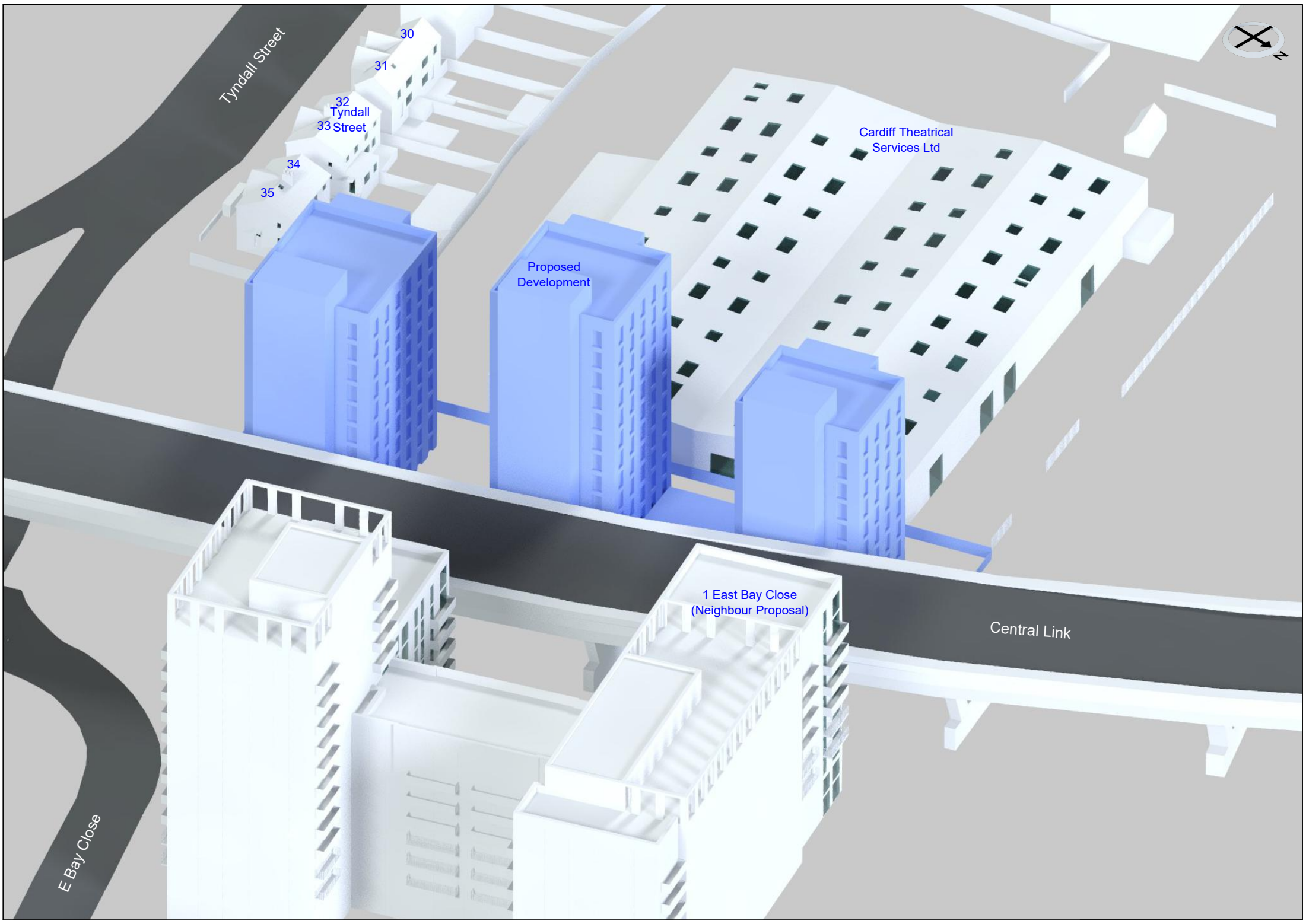
32 Tyndall
Street

33

34

35

Tyndall Street



Tyndall Street

30

31

32 Tyndall
33 Street

34

35

Proposed
Development

Cardiff Theatrical
Services Ltd

1 East Bay Close
(Neighbour Proposal)

Central Link

E Bay Close



1 East Bay Close
(Neighbour Proposal)

E Bay Close

Central Link

Proposed
Development

Tyndall Street

35

34

33
Tyndall
Street

32

31

30

Cardiff Theatrical
Services Ltd

Tyndall Street



31
Tyndall Street

8

30
Tyndall Street

9

7

6

5

4

3

2

1



33
Tyndall Street

32
Tyndall Street



12

13

22

10

11

23

24

18

17

14

15

16

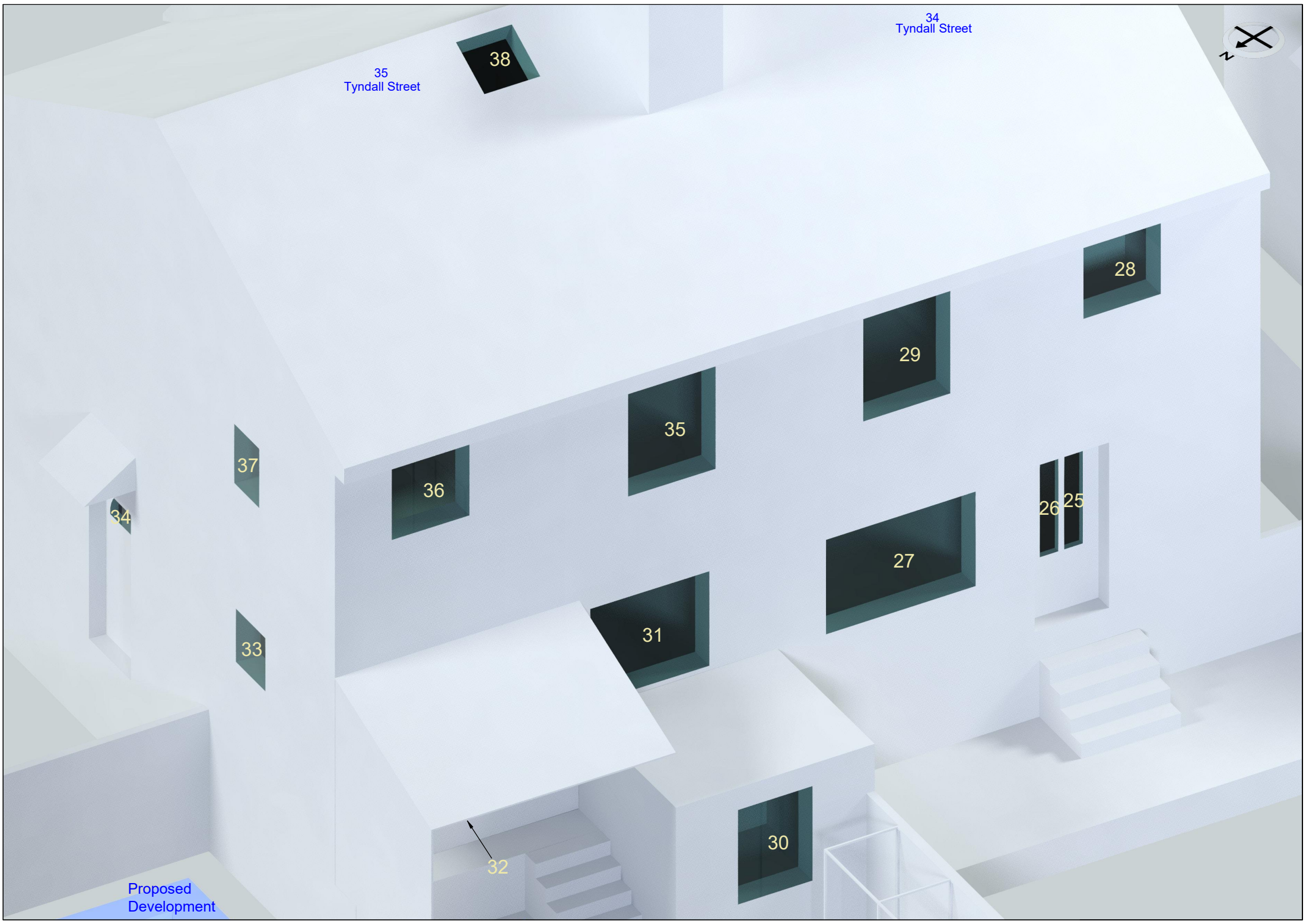


33
Tyndall Street

19

20

21



35
Tyndall Street

34
Tyndall Street



38

28

29

35

36

37

34

33

26

25

27

31

32

30

Proposed
Development



Cardiff Theatrical
Services Ltd

96

87

95

86

69

78

94

85

68

93

84

77

67

92

83

76

66

40

75

65

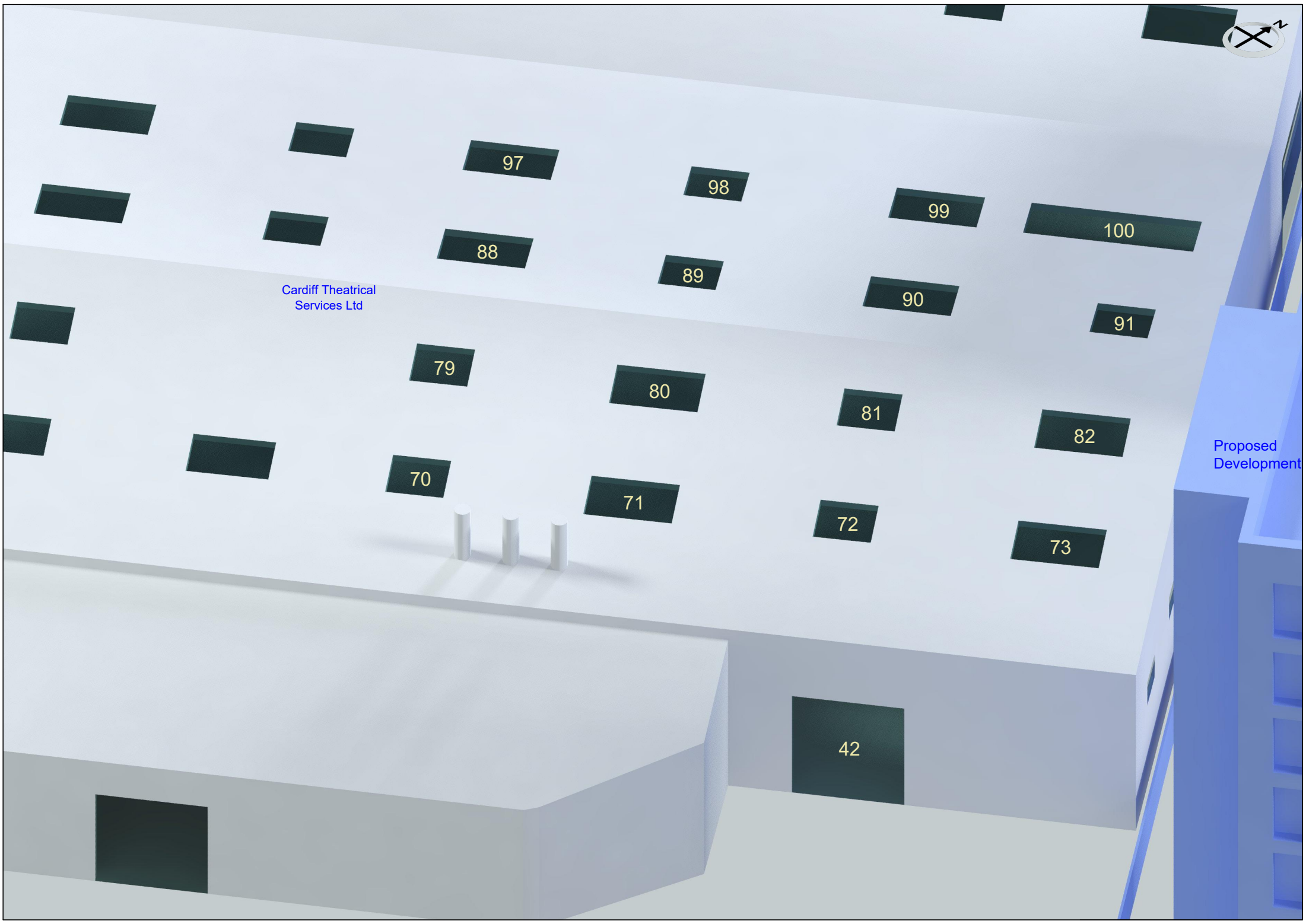
74

64

39

63

41



Cardiff Theatrical
Services Ltd

Proposed
Development

42



Cardiff Theatrical
Services Ltd

48

47

46

45

44

43

Proposed
Development

Proposed
Development



109

119

108

107

118

106

105

129

117

116

115

128

Cardiff Theatrical
Services Ltd

140

127

139

126

138

125

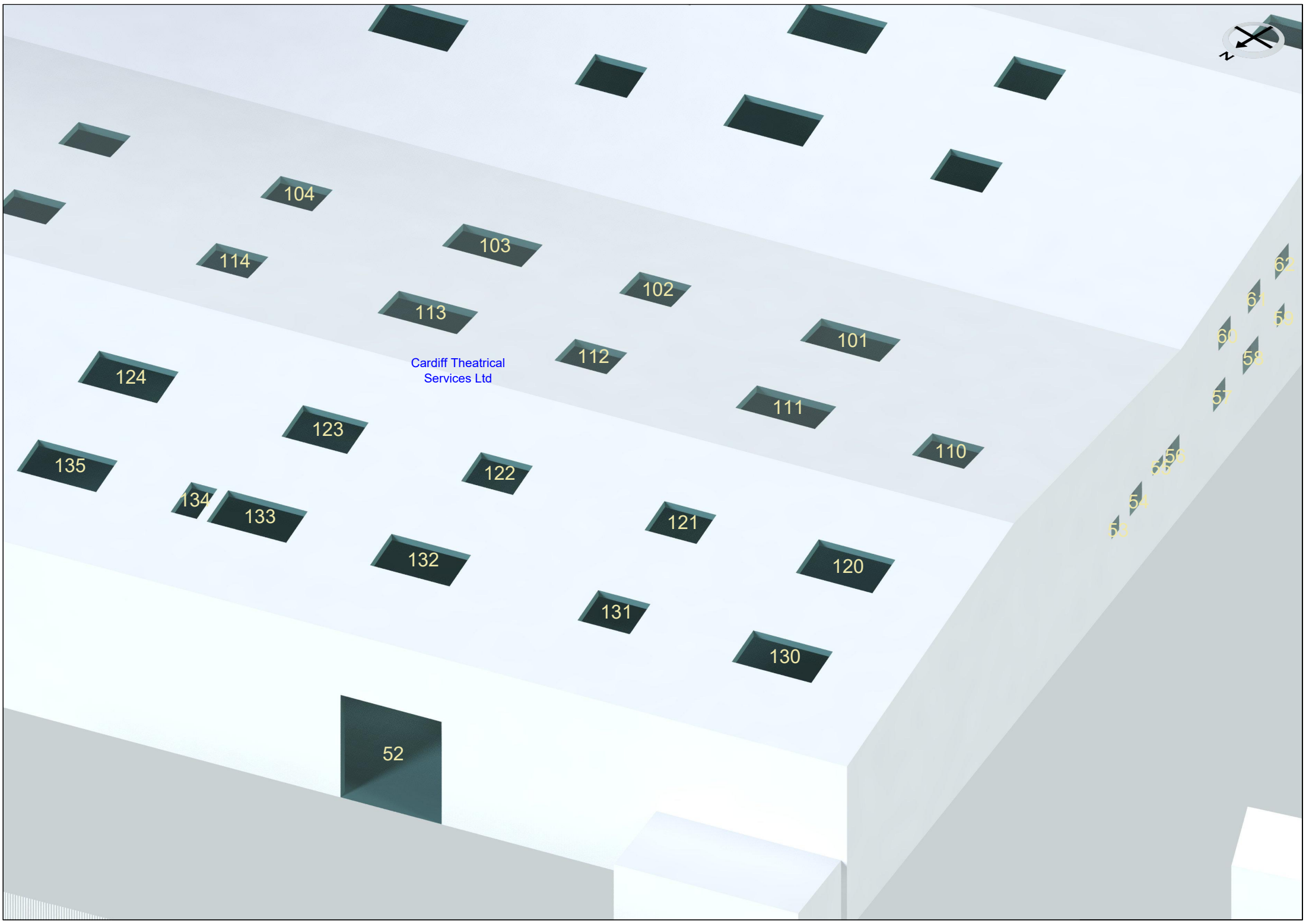
49

137

136

50

51



Cardiff Theatrical
Services Ltd

1 East Bay Close
(Neighbour Proposal)



504

505

461

462

418

419

375

376

332

333

289

290

246

247

203

204

172

173

141

142

506

507

463

464

420

421

377

378

334

335

291

292

248

249

205

206

174

175

143

144

508

465

422

379

336

293

250

207

176

509

466

423

380

337

294

251

208

177

178

145

510

467

424

381

338

295

252

209

179

146

1 East Bay Close
(Neighbour Proposal)



511	512
468	469
425	426
382	383
339	340
296	297
253	254
210	211

513	514	515
470	471	472
427	428	429
384	385	386
341	342	343
298	299	300
255	256	257
212	213	214

147

1 East Bay Close
(Neighbour Proposal)



516

473

430

387

344

301

258

215

180

148

517

474

431

388

345

302

259

216

181

149

518

475

432

389

346

303

260

217

182

150

519

476

433

390

347

304

261

218

183

151

520

477

434

391

348

305

262

219

184

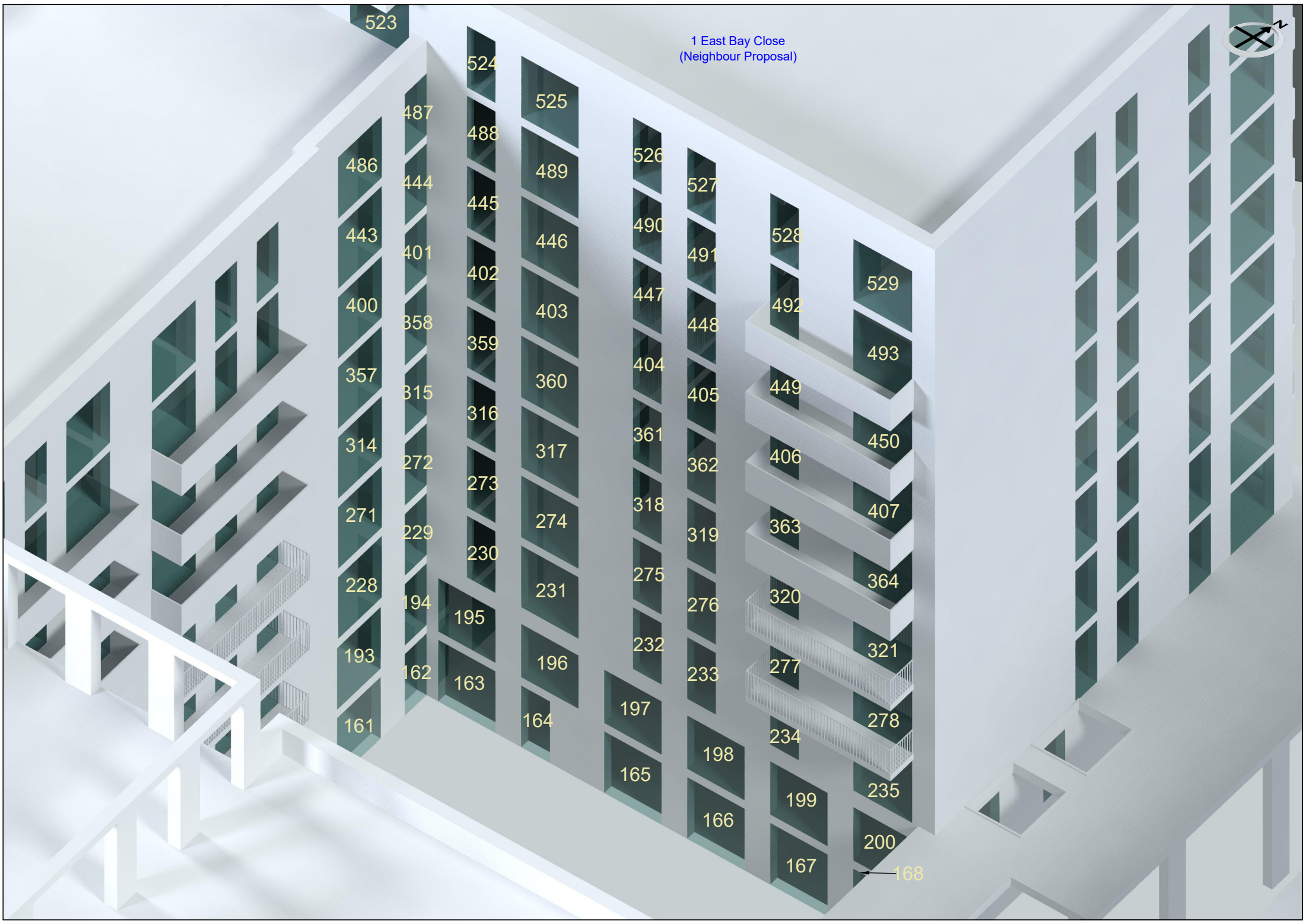
152

521

522



1 East Bay Close
(Neighbour Proposal)



1 East Bay Close
(Neighbour Proposal)



Appendix 2 - Vertical Sky Component

Adjacent to East Bay Close, Cardiff CF10 4BA

Reference	Room Use	Vertical Sky Component				Result	
		Before	After	Loss	Ratio		
<u>30 Tyndall Street</u>							
<u>Ground Floor</u>							
Window 1	Domestic	27.2%	26.3%	0.9%	0.97	Fail	
Window 2	Domestic	35.5%	34.3%	1.2%	0.97		
<u>First Floor</u>							
Window 3	Domestic	35.9%	34.8%	1.1%	0.97		
Window 4	Domestic	35.8%	34.7%	1.1%	0.97		
<u>31 Tyndall Street</u>							
<u>Ground Floor</u>							
Window 5	Domestic	35.3%	34.0%	1.3%	0.96		
Window 6	Domestic	26.6%	25.3%	1.3%	0.95		
<u>First Floor</u>							
Window 7	Domestic	35.7%	34.4%	1.3%	0.96		
Window 8	Domestic	84.3%	83.5%	0.8%	0.99		
Window 9	Domestic	35.6%	34.2%	1.4%	0.96		
<u>32 Tyndall Street</u>							
<u>Ground Floor</u>							
Window 10	Domestic	34.9%	33.1%	1.8%	0.95		
Window 11	Domestic	32.8%	32.4%	0.4%	0.99		
<u>First Floor</u>							
Window 12	Domestic	32.9%	31.1%	1.8%	0.95		
Window 13	Domestic	33.4%	31.5%	1.9%	0.94		
<u>33 Tyndall Street</u>							
<u>Ground Floor</u>							
Window 14	Dining/Kitchen	34.8%	32.6%	2.2%	0.94		
Window 15	Dining/Kitchen	34.6%	32.3%	2.3%	0.93		
Window 16 (Secondary)	Dining/Kitchen	9.3%	7.1%	2.2%	0.76		
Window 17	Domestic	18.7%	16.8%	1.9%	0.9		
Window 18	Hallway & Staircase	9.1%	8.3%	0.8%	0.91		
Window 19	Outbuilding	25.8%	25.8%	0.0%	1.0		
Window 20	Outbuilding	26.6%	26.6%	0.0%	1.0		
Window 21	Outbuilding	26.0%	26.0%	0.0%	1.0		
<u>First Floor</u>							
Window 22	Bedroom	33.3%	31.2%	2.1%	0.94		
Window 23	Bathroom/WC	32.6%	30.4%	2.2%	0.93		
Window 24	Landing & Staircase	24.4%	22.5%	1.9%	0.92		

Appendix 2 - Vertical Sky Component

Adjacent to East Bay Close, Cardiff CF10 4BA

Reference	Room Use	Vertical Sky Component				Result	
		Before	After	Loss	Ratio		
<u>34 Tyndall Street</u>							
<u>Ground Floor</u>							
Window 25	Domestic	27.7%	25.8%	1.9%	0.93	Fail	
Window 26	Domestic	29.1%	27.2%	1.9%	0.93		
Window 27	Domestic	31.9%	30.1%	1.8%	0.94		
<u>First Floor</u>							
Window 28	Domestic	32.2%	30.1%	2.1%	0.93		
Window 29	Domestic	32.5%	30.6%	1.9%	0.94		
<u>35 Tyndall Street</u>							
<u>Ground Floor</u>							
Window 30	Domestic	28.5%	26.6%	1.9%	0.93		
Window 31	Domestic	29.9%	28.6%	1.3%	0.96		
Window 32	Domestic	0.0%	0.0%	0.0%	1.0		
Window 33	Domestic	10.6%	10.4%	0.2%	0.98		
Window 34	Domestic	6.1%	6.1%	0.0%	1.0		
<u>First Floor</u>							
Window 35	Domestic	30.8%	29.5%	1.3%	0.96		
Window 36	Domestic	26.9%	26.4%	0.5%	0.98		
Window 37	Domestic	11.9%	11.9%	0.0%	1.0		
Window 38	Domestic	79.8%	79.3%	0.5%	0.99		
<u>Cardiff Theatrical Services Ltd</u>							
<u>Ground Floor</u>							
Window 39	Non Domestic	23.2%	23.2%	0.0%	1.0		
Window 40	Non Domestic	32.1%	31.6%	0.5%	0.98		
Window 41	Non Domestic	28.8%	28.8%	0.0%	1.0		
Window 42	Non Domestic	24.2%	19.3%	4.9%	0.8		
Window 43	Non Domestic	29.8%	10.0%	19.8%	0.34		
Window 44	Non Domestic	30.0%	10.1%	19.9%	0.34		
Window 45	Non Domestic	30.0%	9.9%	20.1%	0.33		
Window 46	Non Domestic	28.3%	2.9%	25.4%	0.1		
Window 47	Non Domestic	28.1%	2.1%	26.0%	0.07		
Window 48	Non Domestic	27.6%	8.4%	19.2%	0.3		
Window 49	Non Domestic	36.7%	36.5%	0.2%	0.99		
Window 50	Non Domestic	37.9%	37.8%	0.1%	1.0		
Window 51	Non Domestic	38.2%	38.2%	0.0%	1.0		
Window 52	Non Domestic	38.7%	38.7%	0.0%	1.0		
Window 53	Non Domestic	34.5%	34.5%	0.0%	1.0		
Window 54	Non Domestic	34.5%	34.5%	0.0%	1.0		
Window 55	Non Domestic	34.7%	34.7%	0.0%	1.0		
Window 56	Non Domestic	34.5%	34.5%	0.0%	1.0		

Appendix 2 - Vertical Sky Component
Adjacent to East Bay Close, Cardiff CF10 4BA

Reference	Room Use	Vertical Sky Component				Result
		Before	After	Loss	Ratio	
Window 57	Non Domestic	34.4%	34.4%	0.0%	1.0	
Window 58	Non Domestic	34.3%	34.3%	0.0%	1.0	
Window 59	Non Domestic	34.3%	34.3%	0.0%	1.0	
Window 60	Non Domestic	35.8%	35.8%	0.0%	1.0	
Window 61	Non Domestic	35.7%	35.7%	0.0%	1.0	
Window 62	Non Domestic	35.7%	35.7%	0.0%	1.0	
Window 63	Non Domestic	99.1%	98.5%	0.6%	0.99	
Window 64	Non Domestic	99.1%	98.4%	0.7%	0.99	
Window 65	Non Domestic	99.1%	98.3%	0.8%	0.99	
Window 66	Non Domestic	99.0%	97.9%	1.1%	0.99	
Window 67	Non Domestic	98.9%	97.5%	1.4%	0.99	
Window 68	Non Domestic	98.8%	96.7%	2.1%	0.98	
Window 69	Non Domestic	98.6%	95.4%	3.2%	0.97	
Window 70	Non Domestic	98.1%	93.4%	4.7%	0.95	
Window 71	Non Domestic	97.6%	90.0%	7.6%	0.92	
Window 72	Non Domestic	97.8%	85.3%	12.5%	0.87	
Window 73	Non Domestic	97.4%	77.5%	19.9%	0.8	
Window 74	Non Domestic	99.1%	98.6%	0.5%	0.99	
Window 75	Non Domestic	99.1%	98.3%	0.8%	0.99	
Window 76	Non Domestic	99.1%	98.1%	1.0%	0.99	
Window 77	Non Domestic	99.0%	97.6%	1.4%	0.99	
Window 78	Non Domestic	98.9%	96.9%	2.0%	0.98	
Window 79	Non Domestic	98.6%	94.0%	4.6%	0.95	
Window 80	Non Domestic	98.4%	90.9%	7.5%	0.92	
Window 81	Non Domestic	98.1%	85.9%	12.2%	0.88	
Window 82	Non Domestic	97.8%	78.1%	19.7%	0.8	
Window 83	Non Domestic	99.1%	98.4%	0.7%	0.99	
Window 84	Non Domestic	99.1%	98.0%	1.1%	0.99	
Window 85	Non Domestic	99.0%	97.6%	1.4%	0.99	
Window 86	Non Domestic	98.9%	96.9%	2.0%	0.98	
Window 87	Non Domestic	98.8%	95.6%	3.2%	0.97	
Window 88	Non Domestic	98.7%	93.9%	4.8%	0.95	
Window 89	Non Domestic	98.5%	90.8%	7.7%	0.92	
Window 90	Non Domestic	98.3%	84.9%	13.4%	0.86	
Window 91	Non Domestic	98.0%	74.5%	23.5%	0.76	
Window 92	Non Domestic	99.0%	98.3%	0.7%	0.99	
Window 93	Non Domestic	99.0%	97.9%	1.1%	0.99	
Window 94	Non Domestic	99.0%	97.5%	1.5%	0.98	
Window 95	Non Domestic	98.9%	96.7%	2.2%	0.98	
Window 96	Non Domestic	0.0%	0.0%	0.0%	1.0	
Window 97	Non Domestic	98.6%	93.7%	4.9%	0.95	
Window 98	Non Domestic	98.5%	90.6%	7.9%	0.92	
Window 99	Non Domestic	98.2%	84.6%	13.6%	0.86	
Window 100	Non Domestic	98.0%	76.6%	21.4%	0.78	

Appendix 2 - Vertical Sky Component
Adjacent to East Bay Close, Cardiff CF10 4BA

Reference	Room Use	Vertical Sky Component				Result
		Before	After	Loss	Ratio	
Window 101	Non Domestic	99.0%	98.3%	0.7%	0.99	
Window 102	Non Domestic	99.0%	98.0%	1.0%	0.99	
Window 103	Non Domestic	99.0%	97.6%	1.4%	0.99	
Window 104	Non Domestic	98.9%	96.9%	2.0%	0.98	
Window 105	Non Domestic	98.8%	95.6%	3.2%	0.97	
Window 106	Non Domestic	98.7%	94.1%	4.6%	0.95	
Window 107	Non Domestic	98.5%	91.2%	7.3%	0.93	
Window 108	Non Domestic	98.2%	86.5%	11.7%	0.88	
Window 109	Non Domestic	97.9%	78.9%	19.0%	0.81	
Window 110	Non Domestic	99.1%	98.6%	0.5%	0.99	
Window 111	Non Domestic	99.1%	98.4%	0.7%	0.99	
Window 112	Non Domestic	99.1%	98.1%	1.0%	0.99	
Window 113	Non Domestic	99.0%	97.7%	1.3%	0.99	
Window 114	Non Domestic	99.0%	97.1%	1.9%	0.98	
Window 115	Non Domestic	98.9%	95.9%	3.0%	0.97	
Window 116	Non Domestic	98.8%	94.6%	4.2%	0.96	
Window 117	Non Domestic	98.6%	91.8%	6.8%	0.93	
Window 118	Non Domestic	98.3%	87.2%	11.1%	0.89	
Window 119	Non Domestic	98.0%	79.5%	18.5%	0.81	
Window 120	Non Domestic	99.2%	98.6%	0.6%	0.99	
Window 121	Non Domestic	99.2%	98.5%	0.7%	0.99	
Window 122	Non Domestic	99.1%	98.2%	0.9%	0.99	
Window 123	Non Domestic	99.1%	97.8%	1.3%	0.99	
Window 124	Non Domestic	99.0%	97.2%	1.8%	0.98	
Window 125	Non Domestic	98.9%	96.2%	2.7%	0.97	
Window 126	Non Domestic	98.8%	95.0%	3.8%	0.96	
Window 127	Non Domestic	98.6%	92.1%	6.5%	0.93	
Window 128	Non Domestic	98.4%	87.5%	10.9%	0.89	
Window 129	Non Domestic	98.0%	77.4%	20.6%	0.79	
Window 130	Non Domestic	99.2%	98.6%	0.6%	0.99	
Window 131	Non Domestic	99.2%	98.4%	0.8%	0.99	
Window 132	Non Domestic	99.1%	98.2%	0.9%	0.99	
Window 133	Non Domestic	99.1%	97.8%	1.3%	0.99	
Window 134	Non Domestic	99.1%	97.6%	1.5%	0.98	
Window 135	Non Domestic	99.0%	97.2%	1.8%	0.98	
Window 136	Non Domestic	98.9%	96.3%	2.6%	0.97	
Window 137	Non Domestic	98.8%	95.1%	3.7%	0.96	
Window 138	Non Domestic	98.6%	92.7%	5.9%	0.94	
Window 139	Non Domestic	98.3%	88.0%	10.3%	0.9	
Window 140	Non Domestic	97.5%	77.9%	19.6%	0.8	

Appendix 2 - Vertical Sky Component

Adjacent to East Bay Close, Cardiff CF10 4BA

Reference	Room Use	Vertical Sky Component				Result
		Before	After	Loss	Ratio	
1 East Bay Close (Neighbour Proposal)						
Ground Floor						
Window 141	Bin Store	33.2%	33.2%	0.0%	1.0	Fail
Window 142	Bin Store	31.5%	31.5%	0.0%	1.0	
Window 143	Bin Store	10.2%	8.8%	1.4%	0.86	Fail
Window 144	Bin Store	9.7%	8.2%	1.5%	0.85	
Window 145	Plant	9.2%	6.7%	2.5%	0.73	Fail
Window 146	Plant	8.1%	5.1%	3.0%	0.63	
Window 147	Entrance Lobby & Staircase	4.2%	4.0%	0.2%	0.95	Fail
Window 148	Bedroom	10.3%	10.3%	0.0%	1.0	
Window 149	Living/Dining/Kitchen	13.1%	12.6%	0.5%	0.96	Fail
Window 150	Living/Dining/Kitchen	12.3%	11.7%	0.6%	0.95	
Window 151	Bedroom	11.1%	10.5%	0.6%	0.95	Fail
Window 152	Living/Dining	9.7%	9.0%	0.7%	0.93	
Window 153	Bedroom	11.5%	10.2%	1.3%	0.89	Fail
Window 154	Bedroom	12.9%	11.4%	1.5%	0.88	
Window 155	Bedroom	14.1%	12.3%	1.8%	0.87	Fail
Window 156	Bedroom	14.4%	12.6%	1.8%	0.88	
Window 157	Living/Dining/Kitchen	15.3%	13.4%	1.9%	0.88	Fail
Window 158	Living/Dining/Kitchen	15.5%	13.6%	1.9%	0.88	
Window 159	Bedroom	14.8%	13.0%	1.8%	0.88	Fail
Window 160	Bedroom	14.4%	12.6%	1.8%	0.88	
Window 161	Living/Dining/Kitchen	12.8%	11.5%	1.3%	0.9	Fail
Window 162	Bedroom	11.0%	10.3%	0.7%	0.94	
Window 163	Bedroom	7.9%	7.7%	0.2%	0.97	Fail
Window 164	Hallway	8.9%	8.7%	0.2%	0.98	
Window 165	Aminity Area	10.2%	10.0%	0.2%	0.98	Fail
Window 166	Aminity Area	10.9%	10.7%	0.2%	0.98	
Window 167	Aminity Area	9.9%	9.8%	0.1%	0.99	Fail
Window 168	Aminity Area	7.2%	7.1%	0.1%	0.99	
Window 169	Entrance Lobby & Staircase	3.2%	1.6%	1.6%	0.5	Fail
Window 170	Bin Store	28.0%	27.9%	0.1%	1.0	
Window 171	Bin Store	31.0%	30.9%	0.1%	1.0	Fail
First Floor						
Window 172	Living/Dining/Kitchen	33.2%	33.2%	0.0%	1.0	Fail
Window 173	Living/Dining/Kitchen	31.6%	31.6%	0.0%	1.0	
Window 174	Living/Dining/Kitchen	11.1%	10.2%	0.9%	0.92	Fail
Window 175	Bedroom	10.5%	9.5%	1.0%	0.9	
Window 176	Bedroom	9.8%	8.8%	1.0%	0.9	Fail
Window 177	Residential Aminity	9.3%	8.1%	1.2%	0.87	
Window 178	Residential Aminity	9.0%	7.4%	1.6%	0.82	Fail
Window 179	Residential Aminity	8.0%	6.1%	1.9%	0.76	
Window 180	Bedroom	12.4%	12.3%	0.1%	0.99	Fail

Appendix 2 - Vertical Sky Component

Adjacent to East Bay Close, Cardiff CF10 4BA

Reference	Room Use	Vertical Sky Component				Result
		Before	After	Loss	Ratio	
Window 181	Living/Dining/Kitchen	14.6%	13.8%	0.8%	0.95	
Window 182	Living/Dining/Kitchen	13.7%	12.9%	0.8%	0.94	
Window 183	Bedroom	12.4%	11.5%	0.9%	0.93	
Window 184	Living/Dining	10.7%	9.9%	0.8%	0.93	
Window 185	Bedroom	12.5%	11.0%	1.5%	0.88	Fail
Window 186	Bedroom	14.0%	12.3%	1.7%	0.88	
Window 187	Bedroom	9.2%	7.2%	2.0%	0.78	
Window 188	Bedroom	9.6%	7.5%	2.1%	0.78	
Window 189	Living/Dining/Kitchen	10.2%	8.0%	2.2%	0.78	Fail
Window 190	Living/Dining/Kitchen	10.2%	8.1%	2.1%	0.79	Fail
Window 191	Bedroom	9.9%	7.9%	2.0%	0.8	
Window 192	Bedroom	9.4%	7.6%	1.8%	0.81	
Window 193	Living/Dining/Kitchen	14.0%	12.6%	1.4%	0.9	
Window 194	Bedroom	12.0%	11.3%	0.7%	0.94	
Window 195	Bedroom	8.9%	8.7%	0.2%	0.98	
Window 196	Living/Dining/Kitchen	10.4%	10.2%	0.2%	0.98	
Window 197	Bedroom	11.6%	11.4%	0.2%	0.98	
Window 198	Bedroom	12.5%	12.3%	0.2%	0.98	
Window 199	Bedroom	12.8%	12.7%	0.1%	0.99	
Window 200	Living/Dining/Kitchen	10.9%	10.8%	0.1%	0.99	
Window 201	Living/Dining/Kitchen	14.9%	13.7%	1.2%	0.92	
Window 202	Living/Dining/Kitchen	14.6%	13.3%	1.3%	0.91	
Second Floor						
Window 203	Living/Dining/Kitchen	25.4%	25.4%	0.0%	1.0	
Window 204	Living/Dining/Kitchen	21.8%	21.8%	0.0%	1.0	
Window 205	Living/Dining/Kitchen	13.8%	13.4%	0.4%	0.97	
Window 206	Bedroom	12.9%	12.5%	0.4%	0.97	
Window 207	Bedroom	11.9%	11.5%	0.4%	0.97	
Window 208	Bedroom	11.0%	10.5%	0.5%	0.95	
Window 209	Bedroom	10.1%	9.4%	0.7%	0.93	
Window 210	Living/Dining/Kitchen	9.1%	9.0%	0.1%	0.99	
Window 211	Living/Dining/Kitchen	11.8%	11.5%	0.3%	0.97	
Window 212	Bedroom	20.4%	19.7%	0.7%	0.97	
Window 213	Bedroom	13.0%	12.1%	0.9%	0.93	
Window 214	Living/Dining/Kitchen	9.2%	8.3%	0.9%	0.9	
Window 215	Bedroom	11.1%	11.1%	0.0%	1.0	
Window 216	Living/Dining/Kitchen	16.4%	15.4%	1.0%	0.94	
Window 217	Living/Dining/Kitchen	15.5%	14.4%	1.1%	0.93	
Window 218	Bedroom	14.2%	13.1%	1.1%	0.92	
Window 219	Living/Dining	11.9%	10.9%	1.0%	0.92	
Window 220	Bedroom	13.7%	11.9%	1.8%	0.87	
Window 221	Bedroom	15.5%	13.4%	2.1%	0.86	
Window 222	Bedroom	10.6%	8.1%	2.5%	0.76	
						Fail

Appendix 2 - Vertical Sky Component

Adjacent to East Bay Close, Cardiff CF10 4BA

Reference	Room Use	Vertical Sky Component				Result
		Before	After	Loss	Ratio	
Window 223	Bedroom	11.1%	8.4%	2.7%	0.76	Fail
Window 224	Living/Dining/Kitchen	11.5%	8.8%	2.7%	0.77	Fail
Window 225	Living/Dining/Kitchen	11.7%	9.2%	2.5%	0.79	Fail
Window 226	Bedroom	11.4%	9.0%	2.4%	0.79	Fail
Window 227	Bedroom	10.9%	8.6%	2.3%	0.79	Fail
Window 228	Living/Dining/Kitchen	15.5%	14.0%	1.5%	0.9	
Window 229	Bedroom	13.3%	12.4%	0.9%	0.93	
Window 230	Bedroom	10.5%	10.2%	0.3%	0.97	
Window 231	Living/Dining/Kitchen	12.1%	11.8%	0.3%	0.98	
Window 232	Bedroom	13.7%	13.4%	0.3%	0.98	
Window 233	Bedroom	14.0%	13.7%	0.3%	0.98	
Window 234	Bedroom	5.7%	5.4%	0.3%	0.95	
Window 235	Living/Dining/Kitchen	6.7%	6.4%	0.3%	0.96	
Window 236	Living/Dining/Kitchen	26.4%	24.1%	2.3%	0.91	
Window 237	Bedroom	26.4%	24.2%	2.2%	0.92	
Window 238	Bedroom	26.5%	24.3%	2.2%	0.92	
Window 239	Living/Dining/Kitchen	26.5%	24.3%	2.2%	0.92	
Window 240	Living/Dining/Kitchen	23.6%	23.3%	0.3%	0.99	
Window 241	Living/Dining/Kitchen	26.2%	26.1%	0.1%	1.0	
Window 242	Living/Dining/Kitchen	35.6%	35.5%	0.1%	1.0	
Window 243	Bedroom	36.9%	36.6%	0.3%	0.99	
Window 244	Bedroom	36.7%	36.4%	0.3%	0.99	
Window 245	Living/Dining/Kitchen	32.8%	32.5%	0.3%	0.99	
<u>Third Floor</u>						
Window 246	Living/Dining/Kitchen	26.4%	26.4%	0.0%	1.0	
Window 247	Living/Dining/Kitchen	23.7%	23.7%	0.0%	1.0	
Window 248	Living/Dining/Kitchen	20.9%	20.8%	0.1%	1.0	
Window 249	Bedroom	20.0%	19.9%	0.1%	1.0	
Window 250	Bedroom	18.8%	18.8%	0.0%	1.0	
Window 251	Bedroom	17.5%	17.5%	0.0%	1.0	
Window 252	Bedroom	16.3%	16.3%	0.0%	1.0	
Window 253	Living/Dining/Kitchen	12.5%	12.2%	0.3%	0.98	
Window 254	Living/Dining/Kitchen	14.6%	13.6%	1.0%	0.93	
Window 255	Bedroom	22.8%	21.4%	1.4%	0.94	
Window 256	Bedroom	15.1%	13.6%	1.5%	0.9	
Window 257	Living/Dining/Kitchen	11.0%	9.5%	1.5%	0.86	
Window 258	Bedroom	12.4%	12.4%	0.0%	1.0	
Window 259	Living/Dining/Kitchen	18.3%	17.0%	1.3%	0.93	
Window 260	Living/Dining/Kitchen	17.3%	15.9%	1.4%	0.92	
Window 261	Bedroom	15.8%	14.6%	1.2%	0.92	
Window 262	Living/Dining	13.2%	12.0%	1.2%	0.91	
Window 263	Bedroom	14.8%	12.8%	2.0%	0.86	
Window 264	Bedroom	16.8%	14.5%	2.3%	0.86	

Appendix 2 - Vertical Sky Component

Adjacent to East Bay Close, Cardiff CF10 4BA

Reference	Room Use	Vertical Sky Component				Result
		Before	After	Loss	Ratio	
Window 265	Bedroom	11.8%	9.0%	2.8%	0.76	Fail
Window 266	Bedroom	12.3%	9.4%	2.9%	0.76	Fail
Window 267	Living/Dining/Kitchen	12.8%	9.9%	2.9%	0.77	Fail
Window 268	Living/Dining/Kitchen	13.0%	10.3%	2.7%	0.79	Fail
Window 269	Bedroom	12.6%	10.1%	2.5%	0.8	
Window 270	Bedroom	12.1%	9.7%	2.4%	0.8	
Window 271	Living/Dining/Kitchen	17.0%	15.3%	1.7%	0.9	
Window 272	Bedroom	14.5%	13.6%	0.9%	0.94	
Window 273	Bedroom	11.9%	11.6%	0.3%	0.97	
Window 274	Living/Dining/Kitchen	13.8%	13.5%	0.3%	0.98	
Window 275	Bedroom	15.8%	15.4%	0.4%	0.97	
Window 276	Bedroom	16.3%	15.9%	0.4%	0.98	
Window 277	Bedroom	8.2%	7.8%	0.4%	0.95	
Window 278	Living/Dining	9.1%	8.6%	0.5%	0.95	
Window 279	Living/Dining	31.4%	27.4%	4.0%	0.87	
Window 280	Bedroom	31.4%	27.5%	3.9%	0.88	
Window 281	Bedroom	31.5%	27.6%	3.9%	0.88	
Window 282	Living/Dining/Kitchen	31.5%	27.7%	3.8%	0.88	
Window 283	Living/Dining/Kitchen	25.0%	24.4%	0.6%	0.98	
Window 284	Living/Dining/Kitchen	27.1%	26.8%	0.3%	0.99	
Window 285	Living/Dining/Kitchen	36.4%	36.1%	0.3%	0.99	
Window 286	Bedroom	37.5%	37.2%	0.3%	0.99	
Window 287	Bedroom	37.3%	37.0%	0.3%	0.99	
Window 288	Living/Dining/Kitchen	33.3%	33.0%	0.3%	0.99	
Fourth Floor						
Window 289	Living/Dining/Kitchen	27.9%	27.9%	0.0%	1.0	
Window 290	Living/Dining/Kitchen	26.1%	26.1%	0.0%	1.0	
Window 291	Living/Dining/Kitchen	34.1%	30.7%	3.4%	0.9	
Window 292	Bedroom	33.7%	30.2%	3.5%	0.9	
Window 293	Bedroom	33.2%	29.5%	3.7%	0.89	
Window 294	Bedroom	32.6%	28.8%	3.8%	0.88	
Window 295	Bedroom	32.1%	28.1%	4.0%	0.88	
Window 296	Living/Dining/Kitchen	17.7%	15.1%	2.6%	0.85	
Window 297	Living/Dining/Kitchen	18.3%	15.6%	2.7%	0.85	
Window 298	Bedroom	25.2%	22.7%	2.5%	0.9	
Window 299	Bedroom	17.5%	15.1%	2.4%	0.86	
Window 300	Living/Dining/Kitchen	13.4%	11.3%	2.1%	0.84	
Window 301	Bedroom	14.0%	14.0%	0.0%	1.0	
Window 302	Living/Dining/Kitchen	20.4%	19.0%	1.4%	0.93	
Window 303	Living/Dining/Kitchen	19.4%	17.8%	1.6%	0.92	
Window 304	Bedroom	17.8%	16.3%	1.5%	0.92	
Window 305	Living/Dining	14.7%	13.4%	1.3%	0.91	
Window 306	Bedroom	16.0%	13.9%	2.1%	0.87	

Appendix 2 - Vertical Sky Component

Adjacent to East Bay Close, Cardiff CF10 4BA

Reference	Room Use	Vertical Sky Component				Result	
		Before	After	Loss	Ratio		
Window 307	Bedroom	18.3%	15.8%	2.5%	0.86	Fail	
Window 308	Bedroom	13.1%	10.1%	3.0%	0.77		
Window 309	Bedroom	13.8%	10.6%	3.2%	0.77		
Window 310	Living/Dining/Kitchen	14.5%	11.3%	3.2%	0.78		
Window 311	Living/Dining/Kitchen	14.6%	11.7%	2.9%	0.8	Fail	
Window 312	Bedroom	14.2%	11.5%	2.7%	0.81		
Window 313	Bedroom	13.7%	11.0%	2.7%	0.8		
Window 314	Living/Dining/Kitchen	18.8%	16.9%	1.9%	0.9		
Window 315	Bedroom	15.9%	14.9%	1.0%	0.94	Fail	
Window 316	Bedroom	13.7%	13.3%	0.4%	0.97		
Window 317	Living/Dining/Kitchen	16.0%	15.6%	0.4%	0.98		
Window 318	Bedroom	18.4%	18.0%	0.4%	0.98		
Window 319	Bedroom	19.0%	18.5%	0.5%	0.97	Fail	
Window 320	Bedroom	11.2%	10.6%	0.6%	0.95		
Window 321	Living/Dining/Kitchen	11.9%	11.2%	0.7%	0.94		
Window 322	Living/Dining/Kitchen	37.0%	30.8%	6.2%	0.83		
Window 323	Bedroom	37.0%	30.9%	6.1%	0.84	Fail	
Window 324	Bedroom	37.1%	31.0%	6.1%	0.84		
Window 325	Living/Dining/Kitchen	37.1%	31.1%	6.0%	0.84		
Window 326	Living/Dining/Kitchen	26.5%	25.7%	0.8%	0.97		
Window 327	Living/Dining/Kitchen	28.3%	27.8%	0.5%	0.98	Fail	
Window 328	Living/Dining/Kitchen	37.2%	36.7%	0.5%	0.99		
Window 329	Bedroom	38.3%	37.9%	0.4%	0.99		
Window 330	Unknown	38.0%	37.6%	0.4%	0.99		
Window 331	Living/Dining/Kitchen	33.9%	33.5%	0.4%	0.99	Fail	
Fifth Floor							
Window 332	Kitchen	28.6%	28.6%	0.0%	1.0		
Window 333	Kitchen	27.1%	27.1%	0.0%	1.0		
Window 334	Kitchen	39.6%	34.9%	4.7%	0.88		
Window 335	Bedroom	39.6%	34.5%	5.1%	0.87	Fail	
Window 336	Bedroom	39.6%	34.0%	5.6%	0.86		
Window 337	Bedroom	39.6%	33.5%	6.1%	0.85		
Window 338	Bedroom	39.6%	33.0%	6.6%	0.83		
Window 339	Living/Dining/Kitchen	20.2%	16.8%	3.4%	0.83	Fail	
Window 340	Living/Dining/Kitchen	20.4%	17.5%	2.9%	0.86		
Window 341	Bedroom	26.9%	24.3%	2.6%	0.9		
Window 342	Bedroom	18.9%	16.5%	2.4%	0.87		
Window 343	Living/Dining/Kitchen	15.1%	13.0%	2.1%	0.86	Fail	
Window 344	Bedroom	15.6%	15.6%	0.0%	1.0		
Window 345	Living/Dining/Kitchen	22.6%	21.1%	1.5%	0.93		
Window 346	Living/Dining/Kitchen	21.5%	20.0%	1.5%	0.93		
Window 347	Bedroom	19.7%	18.3%	1.4%	0.93	Fail	
Window 348	Living/Dining	16.1%	14.9%	1.2%	0.93		

Appendix 2 - Vertical Sky Component
Adjacent to East Bay Close, Cardiff CF10 4BA

Reference	Room Use	Vertical Sky Component				Result
		Before	After	Loss	Ratio	
Window 349	Bedroom	17.1%	15.0%	2.1%	0.88	Fail
Window 350	Bedroom	19.5%	17.1%	2.4%	0.88	
Window 351	Bedroom	14.3%	11.4%	2.9%	0.8	
Window 352	Bedroom	14.9%	11.8%	3.1%	0.79	
Window 353	Living/Dining/Kitchen	16.0%	13.0%	3.0%	0.81	
Window 354	Living/Dining/Kitchen	16.0%	13.2%	2.8%	0.83	
Window 355	Bedroom	15.4%	12.8%	2.6%	0.83	
Window 356	Bedroom	15.3%	12.8%	2.5%	0.84	
Window 357	Living/Dining/Kitchen	20.4%	18.6%	1.8%	0.91	
Window 358	Bedroom	17.1%	16.1%	1.0%	0.94	
Window 359	Bedroom	15.6%	15.3%	0.3%	0.98	
Window 360	Living/Dining/Kitchen	18.4%	18.0%	0.4%	0.98	
Window 361	Bedroom	21.3%	20.9%	0.4%	0.98	
Window 362	Bedroom	21.9%	21.4%	0.5%	0.98	
Window 363	Bedroom	14.2%	13.6%	0.6%	0.96	
Window 364	Living/Dining/Kitchen	14.4%	13.7%	0.7%	0.95	
Window 365	Living/Dining/Kitchen	39.1%	32.8%	6.3%	0.84	
Window 366	Bedroom	39.2%	32.9%	6.3%	0.84	
Window 367	Bedroom	39.3%	33.0%	6.3%	0.84	
Window 368	Living/Dining/Kitchen	39.3%	33.2%	6.1%	0.84	
Window 369	Living/Dining/Kitchen	27.0%	26.3%	0.7%	0.97	
Window 370	Living/Dining/Kitchen	28.8%	28.2%	0.6%	0.98	
Window 371	Living/Dining/Kitchen	37.6%	37.2%	0.4%	0.99	
Window 372	Bedroom	38.7%	38.3%	0.4%	0.99	
Window 373	Bedroom	38.4%	38.0%	0.4%	0.99	
Window 374	Living/Dining/Kitchen	34.2%	33.9%	0.3%	0.99	
<u>Sixth Floor</u>						
Window 375	Living/Dining/Kitchen	28.6%	28.6%	0.0%	1.0	
Window 376	Living/Dining/Kitchen	27.1%	27.1%	0.0%	1.0	
Window 377	Living/Dining/Kitchen	39.6%	35.9%	3.7%	0.91	
Window 378	Bedroom	39.6%	35.5%	4.1%	0.9	
Window 379	Bedroom	39.6%	35.1%	4.5%	0.89	
Window 380	Bedroom	39.6%	34.7%	4.9%	0.88	
Window 381	Bedroom	39.6%	34.2%	5.4%	0.86	
Window 382	Living/Dining/Kitchen	21.1%	18.1%	3.0%	0.86	
Window 383	Living/Dining/Kitchen	21.6%	19.1%	2.5%	0.88	
Window 384	Bedroom	28.1%	25.9%	2.2%	0.92	
Window 385	Bedroom	20.0%	18.0%	2.0%	0.9	
Window 386	Living/Dining/Kitchen	16.7%	14.9%	1.8%	0.89	
Window 387	Bedroom	17.4%	17.4%	0.0%	1.0	
Window 388	Living/Dining/Kitchen	24.8%	23.5%	1.3%	0.95	
Window 389	Living/Dining/Kitchen	23.8%	22.6%	1.2%	0.95	
Window 390	Bedroom	21.9%	20.8%	1.1%	0.95	

Appendix 2 - Vertical Sky Component
Adjacent to East Bay Close, Cardiff CF10 4BA

Reference	Room Use	Vertical Sky Component				Result
		Before	After	Loss	Ratio	
Window 391	Living/Dining	17.7%	16.7%	1.0%	0.94	
Window 392	Bedroom	18.0%	16.2%	1.8%	0.9	
Window 393	Bedroom	20.8%	18.7%	2.1%	0.9	
Window 394	Bedroom	15.5%	13.1%	2.4%	0.85	
Window 395	Bedroom	15.8%	13.3%	2.5%	0.84	
Window 396	Living/Dining/Kitchen	17.4%	15.0%	2.4%	0.86	
Window 397	Living/Dining/Kitchen	17.5%	15.2%	2.3%	0.87	
Window 398	Bedroom	16.4%	14.3%	2.1%	0.87	
Window 399	Bedroom	16.9%	14.9%	2.0%	0.88	
Window 400	Living/Dining/Kitchen	22.0%	20.5%	1.5%	0.93	
Window 401	Bedroom	18.1%	17.3%	0.8%	0.96	
Window 402	Bedroom	17.8%	17.6%	0.2%	0.99	
Window 403	Living/Dining/Kitchen	21.4%	21.1%	0.3%	0.99	
Window 404	Bedroom	24.6%	24.3%	0.3%	0.99	
Window 405	Bedroom	25.2%	24.8%	0.4%	0.98	
Window 406	Bedroom	17.2%	16.7%	0.5%	0.97	
Window 407	Living/Dining/Kitchen	16.8%	16.3%	0.5%	0.97	
Window 408	Living/Dining/Kitchen	39.3%	34.0%	5.3%	0.87	
Window 409	Bedroom	39.3%	34.1%	5.2%	0.87	
Window 410	Bedroom	39.4%	34.2%	5.2%	0.87	
Window 411	Living/Dining/Kitchen	39.4%	34.3%	5.1%	0.87	
Window 412	Living/Dining/Kitchen	27.1%	26.5%	0.6%	0.98	
Window 413	Living/Dining/Kitchen	28.8%	28.3%	0.5%	0.98	
Window 414	Living/Dining/Kitchen	37.7%	37.3%	0.4%	0.99	
Window 415	Bedroom	38.8%	38.4%	0.4%	0.99	
Window 416	Bedroom	38.5%	38.1%	0.4%	0.99	
Window 417	Living/Dining/Kitchen	34.2%	33.9%	0.3%	0.99	
<u>Seventh Floor</u>						
Window 418	Living/Dining/Kitchen	28.8%	28.8%	0.0%	1.0	
Window 419	Living/Dining/Kitchen	27.1%	27.1%	0.0%	1.0	
Window 420	Living/Dining/Kitchen	39.6%	36.8%	2.8%	0.93	
Window 421	Bedroom	39.6%	36.6%	3.0%	0.92	
Window 422	Bedroom	39.6%	36.2%	3.4%	0.91	
Window 423	Bedroom	39.6%	35.9%	3.7%	0.91	
Window 424	Bedroom	39.6%	35.5%	4.1%	0.9	
Window 425	Living/Dining/Kitchen	22.1%	19.7%	2.4%	0.89	
Window 426	Living/Dining/Kitchen	23.0%	20.9%	2.1%	0.91	
Window 427	Bedroom	30.0%	28.2%	1.8%	0.94	
Window 428	Bedroom	21.5%	19.9%	1.6%	0.93	
Window 429	Living/Dining/Kitchen	18.4%	17.0%	1.4%	0.92	
Window 430	Bedroom	19.4%	19.4%	0.0%	1.0	
Window 431	Living/Dining/Kitchen	27.4%	26.4%	1.0%	0.96	
Window 432	Living/Dining/Kitchen	26.6%	25.6%	1.0%	0.96	

Appendix 2 - Vertical Sky Component
Adjacent to East Bay Close, Cardiff CF10 4BA

Reference	Room Use	Vertical Sky Component				Result
		Before	After	Loss	Ratio	
Window 433	Bedroom	24.9%	24.0%	0.9%	0.96	
Window 434	Living/Dining	19.7%	18.9%	0.8%	0.96	
Window 435	Bedroom	18.8%	17.4%	1.4%	0.93	
Window 436	Bedroom	22.4%	20.8%	1.6%	0.93	
Window 437	Bedroom	28.0%	26.1%	1.9%	0.93	
Window 438	Bedroom	29.6%	27.7%	1.9%	0.94	
Window 439	Living/Dining/Kitchen	30.9%	29.0%	1.9%	0.94	
Window 440	Living/Dining/Kitchen	31.4%	29.6%	1.8%	0.94	
Window 441	Bedroom	30.7%	29.1%	1.6%	0.95	
Window 442	Bedroom	29.6%	28.0%	1.6%	0.95	
Window 443	Living/Dining/Kitchen	24.0%	22.8%	1.2%	0.95	
Window 444	Bedroom	19.1%	18.5%	0.6%	0.97	
Window 445	Bedroom	20.9%	20.7%	0.2%	0.99	
Window 446	Living/Dining/Kitchen	25.5%	25.3%	0.2%	0.99	
Window 447	Bedroom	28.7%	28.5%	0.2%	0.99	
Window 448	Bedroom	29.1%	28.9%	0.2%	0.99	
Window 449	Bedroom	20.4%	20.1%	0.3%	0.99	
Window 450	Living/Dining/Kitchen	19.5%	19.1%	0.4%	0.98	
Window 451	Living/Dining/Kitchen	39.4%	35.2%	4.2%	0.89	
Window 452	Bedroom	39.4%	35.2%	4.2%	0.89	
Window 453	Bedroom	39.5%	35.3%	4.2%	0.89	
Window 454	Living/Dining/Kitchen	39.5%	35.4%	4.1%	0.9	
Window 455	Living/Dining/Kitchen	27.1%	26.6%	0.5%	0.98	
Window 456	Living/Dining/Kitchen	28.8%	28.4%	0.4%	0.99	
Window 457	Living/Dining/Kitchen	38.0%	37.7%	0.3%	0.99	
Window 458	Bedroom	38.9%	38.6%	0.3%	0.99	
Window 459	Bedroom	38.5%	38.3%	0.2%	0.99	
Window 460	Living/Dining/Kitchen	34.2%	34.0%	0.2%	0.99	
<u>Eighth Floor</u>						
Window 461	Living/Dining/Kitchen	39.5%	39.5%	0.0%	1.0	
Window 462	Living/Dining/Kitchen	39.6%	39.6%	0.0%	1.0	
Window 463	Living/Dining/Kitchen	39.6%	37.7%	1.9%	0.95	
Window 464	Bedroom	39.6%	37.6%	2.0%	0.95	
Window 465	Bedroom	39.6%	37.3%	2.3%	0.94	
Window 466	Bedroom	39.6%	37.1%	2.5%	0.94	
Window 467	Bedroom	39.6%	36.8%	2.8%	0.93	
Window 468	Living/Dining/Kitchen	35.7%	33.8%	1.9%	0.95	
Window 469	Living/Dining/Kitchen	35.0%	33.4%	1.6%	0.95	
Window 470	Bedroom	34.3%	33.0%	1.3%	0.96	
Window 471	Bedroom	33.9%	32.6%	1.3%	0.96	
Window 472	Living/Dining/Kitchen	32.9%	31.8%	1.1%	0.97	
Window 473	Bedroom	21.5%	21.5%	0.0%	1.0	
Window 474	Living/Dining/Kitchen	30.4%	29.5%	0.9%	0.97	

Appendix 2 - Vertical Sky Component
Adjacent to East Bay Close, Cardiff CF10 4BA

Reference	Room Use	Vertical Sky Component				Result
		Before	After	Loss	Ratio	
Window 475	Living/Dining/Kitchen	29.9%	29.1%	0.8%	0.97	
Window 476	Bedroom	28.7%	28.0%	0.7%	0.98	
Window 477	Living/Dining	23.5%	22.9%	0.6%	0.97	
Window 478	Bedroom	19.8%	18.7%	1.1%	0.94	
Window 479	Bedroom	24.6%	23.3%	1.3%	0.95	
Window 480	Bedroom	31.0%	29.6%	1.4%	0.95	
Window 481	Bedroom	32.6%	31.2%	1.4%	0.96	
Window 482	Living/Dining/Kitchen	33.8%	32.4%	1.4%	0.96	
Window 483	Living/Dining/Kitchen	34.2%	32.9%	1.3%	0.96	
Window 484	Bedroom	33.7%	32.5%	1.2%	0.96	
Window 485	Bedroom	32.8%	31.6%	1.2%	0.96	
Window 486	Living/Dining/Kitchen	27.1%	26.1%	1.0%	0.96	
Window 487	Bedroom	20.3%	19.8%	0.5%	0.98	
Window 488	Bedroom	26.7%	26.6%	0.1%	1.0	
Window 489	Living/Dining/Kitchen	31.3%	31.1%	0.2%	0.99	
Window 490	Bedroom	33.1%	33.0%	0.1%	1.0	
Window 491	Bedroom	33.6%	33.4%	0.2%	0.99	
Window 492	Bedroom	34.2%	34.0%	0.2%	0.99	
Window 493	Living/Dining/Kitchen	34.7%	34.5%	0.2%	0.99	
Window 494	Living/Dining/Kitchen	39.5%	36.4%	3.1%	0.92	
Window 495	Bedroom	39.5%	36.4%	3.1%	0.92	
Window 496	Bedroom	39.5%	36.5%	3.0%	0.92	
Window 497	Living/Dining/Kitchen	39.5%	36.5%	3.0%	0.92	
Window 498	Living/Dining/Kitchen	39.5%	39.2%	0.3%	0.99	
Window 499	Living/Dining/Kitchen	39.5%	39.2%	0.3%	0.99	
Window 500	Living/Dining/Kitchen	39.4%	39.1%	0.3%	0.99	
Window 501	Bedroom	39.0%	38.8%	0.2%	0.99	
Window 502	Bedroom	38.6%	38.4%	0.2%	0.99	
Window 503	Living/Dining/Kitchen	34.3%	34.1%	0.2%	0.99	
<u>Ninth Floor</u>						
Window 504	Living/Dining/Kitchen	39.6%	39.6%	0.0%	1.0	
Window 505	Living/Dining/Kitchen	39.6%	39.6%	0.0%	1.0	
Window 506	Living/Dining/Kitchen	39.6%	38.6%	1.0%	0.97	
Window 507	Bedroom	39.6%	38.5%	1.1%	0.97	
Window 508	Bedroom	39.6%	38.3%	1.3%	0.97	
Window 509	Bedroom	39.6%	38.2%	1.4%	0.96	
Window 510	Bedroom	39.6%	38.0%	1.6%	0.96	
Window 511	Living/Dining/Kitchen	36.7%	35.4%	1.3%	0.96	
Window 512	Living/Dining/Kitchen	36.2%	35.1%	1.1%	0.97	
Window 513	Bedroom	35.7%	34.7%	1.0%	0.97	
Window 514	Bedroom	35.3%	34.4%	0.9%	0.97	
Window 515	Living/Dining/Kitchen	34.6%	33.8%	0.8%	0.98	
Window 516	Bedroom	23.9%	23.9%	0.0%	1.0	

Appendix 2 - Vertical Sky Component
Adjacent to East Bay Close, Cardiff CF10 4BA

Reference	Room Use	Vertical Sky Component				Result
		Before	After	Loss	Ratio	
Window 517	Living/Dining/Kitchen	33.1%	32.5%	0.6%	0.98	
Window 518	Living/Dining/Kitchen	32.9%	32.4%	0.5%	0.98	
Window 519	Bedroom	32.5%	32.0%	0.5%	0.98	
Window 520	Amiity Area	32.0%	31.6%	0.4%	0.99	
Window 521	Amiity Area	31.4%	31.0%	0.4%	0.99	
Window 522	Amiity Area	30.9%	30.6%	0.3%	0.99	
Window 523	Amiity Area	23.8%	23.8%	0.0%	1.0	
Window 524	Amiity Area	35.3%	35.2%	0.1%	1.0	
Window 525	Living/Dining/Kitchen	36.2%	36.1%	0.1%	1.0	
Window 526	Bedroom	36.5%	36.4%	0.1%	1.0	
Window 527	Bedroom	36.6%	36.6%	0.0%	1.0	
Window 528	Bedroom	36.9%	36.8%	0.1%	1.0	
Window 529	Living/Dining/Kitchen	37.1%	37.0%	0.1%	1.0	
Window 530	Living/Dining/Kitchen	39.6%	37.5%	2.1%	0.95	
Window 531	Bedroom	39.6%	37.5%	2.1%	0.95	
Window 532	Bedroom	39.6%	37.5%	2.1%	0.95	
Window 533	Living/Dining/Kitchen	39.6%	37.6%	2.0%	0.95	
Window 534	Living/Dining/Kitchen	39.5%	39.3%	0.2%	0.99	
Window 535	Living/Dining/Kitchen	39.5%	39.3%	0.2%	0.99	
Window 536	Living/Dining/Kitchen	39.4%	39.2%	0.2%	0.99	
Window 537	Bedroom	39.1%	38.9%	0.2%	0.99	
Window 538	Bedroom	38.6%	38.5%	0.1%	1.0	
Window 539	Living/Dining/Kitchen	34.3%	34.2%	0.1%	1.0	

Appendix 2 - Daylight Distribution

Adjacent to East Bay Close, Cardiff CF10 4BA

Reference	Room Use	Daylight Distribution				Result
		Before	After	Loss	Ratio	
33 Tyndall Street						
Ground Floor						
Windows 14 to 16	Dining/Kitchen	98%	97%	1%	0.99	
Window 17	Domestic	81%	81%	0%	1.0	
Window 18	Hallway	71%	71%	0%	1.0	
First Floor						
Window 22	Bedroom	97%	97%	0%	1.0	
Window 23	Bathroom/WC	86%	86%	0%	1.0	
Window 24	Landing	0.0%	0.0%	0%	1.0	
1 East Bay Close (Neighbour Proposal)						
Ground Floor						
Windows 141 to 144	Bin Store	100%	100%	0%	1.0	Fail
Windows 145 & 146	Plant	98%	91%	7%	0.93	
Window 147	Entrance Lobby	73%	55%	18%	0.75	
Window 147	Staircase	0%	0%	0%	1.0	
Window 148	Bedroom	82%	82%	0%	1.0	
Window 149	Living/Dining/Kitchen	57%	57%	0%	1.0	
Window 150	Living/Dining/Kitchen	44%	44%	0%	1.0	
Window 151	Bedroom	62%	62%	0%	1.0	
Window 152	Living/Dining	44%	44%	0%	1.0	
Window 153	Bedroom	67%	64%	3%	0.96	
Window 154	Bedroom	57%	54%	3%	0.95	
Window 155	Bedroom	80%	74%	6%	0.93	
Window 156	Bedroom	87%	87%	0%	1.0	
Window 157	Living/Dining/Kitchen	100%	100%	0%	1.0	
Window 158	Living/Dining/Kitchen	100%	100%	0%	1.0	
Window 159	Bedroom	95%	94%	1%	0.99	
Window 160	Bedroom	77%	73%	4%	0.95	
Window 161	Living/Dining/Kitchen	83%	74%	9%	0.89	
Window 162	Bedroom	88%	84%	4%	0.95	
Window 163	Bedroom	36%	35%	1%	0.97	
Window 164	Hallway	18%	18%	0%	1.0	
Windows 165 to 168	Aminity Area	73%	73%	0%	1.0	
Window 169	Entrance Lobby	91%	89%	2%	0.98	Fail
Window 169	Staircase	55%	40%	15%	0.73	
Windows 170 & 171	Bin Store	95%	93%	2%	0.98	
First Floor						
Windows 172 to 174	Living/Dining/Kitchen	100%	100%	0%	1.0	Fail
Window 175	Bedroom	98%	87%	11%	0.89	
Window 176	Bedroom	92%	73%	19%	0.79	
Windows 177 to 179	Residential Aminity	99%	97%	2%	0.98	

Appendix 2 - Daylight Distribution

Adjacent to East Bay Close, Cardiff CF10 4BA

Reference	Room Use	Daylight Distribution				Result
		Before	After	Loss	Ratio	
Window 180	Bedroom	80%	80%	0%	1.0	
Window 181	Living/Dining/Kitchen	54%	54%	0%	1.0	
Window 182	Living/Dining/Kitchen	43%	43%	0%	1.0	
Window 183	Bedroom	57%	57%	0%	1.0	
Window 184	Living/Dining	43%	43%	0%	1.0	
Window 185	Bedroom	67%	65%	2%	0.97	
Window 186	Bedroom	57%	55%	2%	0.96	
Window 187	Bedroom	80%	72%	8%	0.9	
Window 188	Bedroom	85%	84%	1%	0.99	
Window 189	Living/Dining/Kitchen	100%	100%	0%	1.0	
Window 190	Living/Dining/Kitchen	100%	100%	0%	1.0	
Window 191	Bedroom	93%	92%	1%	0.99	
Window 192	Bedroom	74%	70%	4%	0.95	
Window 193	Living/Dining/Kitchen	84%	78%	6%	0.93	
Window 194	Bedroom	90%	86%	4%	0.96	
Window 195	Bedroom	34%	32%	2%	0.94	
Window 196	Living/Dining/Kitchen	18%	18%	0%	1.0	
Window 197	Bedroom	32%	32%	0%	1.0	
Window 198	Bedroom	41%	41%	0%	1.0	
Window 199	Bedroom	49%	49%	0%	1.0	
Windows 200 to 202	Living/Dining/Kitchen	95%	92%	3%	0.97	
<u>Second Floor</u>						
Windows 203 to 205	Living/Dining/Kitchen	100%	100%	0%	1.0	
Window 206	Bedroom	98%	90%	8%	0.92	
Window 207	Bedroom	92%	75%	17%	0.82	
Window 208	Bedroom	93%	87%	6%	0.94	
Window 209	Bedroom	98%	92%	6%	0.94	
Windows 210 & 211	Living/Dining/Kitchen	97%	90%	7%	0.93	
Window 212	Bedroom	76%	76%	0%	1.0	
Window 213	Bedroom	87%	87%	0%	1.0	
Window 214	Living/Dining/Kitchen	72%	72%	0%	1.0	
Window 215	Bedroom	74%	74%	0%	1.0	
Window 216	Living/Dining/Kitchen	58%	58%	0%	1.0	
Window 217	Living/Dining/Kitchen	47%	47%	0%	1.0	
Window 218	Bedroom	62%	62%	0%	1.0	
Window 219	Living/Dining	47%	47%	0%	1.0	
Window 220	Bedroom	67%	64%	3%	0.96	
Window 221	Bedroom	59%	57%	2%	0.97	
Window 222	Bedroom	77%	72%	5%	0.94	
Window 223	Bedroom	87%	87%	0%	1.0	
Window 224	Living/Dining/Kitchen	95%	95%	0%	1.0	
Window 225	Living/Dining/Kitchen	97%	97%	0%	1.0	
Window 226	Bedroom	92%	91%	1%	0.99	

Appendix 2 - Daylight Distribution

Adjacent to East Bay Close, Cardiff CF10 4BA

Reference	Room Use	Daylight Distribution				Result
		Before	After	Loss	Ratio	
Window 227	Bedroom	75%	72%	3%	0.96	
Window 228	Living/Dining/Kitchen	81%	75%	6%	0.93	
Window 229	Bedroom	90%	87%	3%	0.97	
Window 230	Bedroom	40%	40%	0%	1.0	
Window 231	Living/Dining/Kitchen	26%	26%	0%	1.0	
Window 232	Bedroom	43%	43%	0%	1.0	
Window 233	Bedroom	34%	34%	0%	1.0	
Window 234	Bedroom	22%	22%	0%	1.0	
Windows 235 & 236	Living/Dining/Kitchen	78%	77%	1%	0.99	
Window 237	Bedroom	90%	88%	2%	0.98	
Window 238	Bedroom	98%	96%	2%	0.98	
Windows 239 to 241	Living/Dining/Kitchen	100%	100%	0%	1.0	
Window 242	Living/Dining/Kitchen	100%	99%	1%	0.99	
Window 243	Bedroom	97%	97%	0%	1.0	
Window 244	Bedroom	97%	97%	0%	1.0	
Window 245	Living/Dining/Kitchen	99%	99%	0%	1.0	
<u>Third Floor</u>						
Windows 246 to 248	Living/Dining/Kitchen	99%	99%	0%	1.0	
Window 249	Bedroom	89%	89%	0%	1.0	
Window 250	Bedroom	66%	66%	0%	1.0	
Window 251	Bedroom	60%	60%	0%	1.0	
Window 252	Bedroom	70%	70%	0%	1.0	
Windows 253 & 254	Living/Dining/Kitchen	96%	95%	1%	0.99	
Window 255	Bedroom	80%	80%	0%	1.0	
Window 256	Bedroom	88%	88%	0%	1.0	
Window 257	Living/Dining/Kitchen	73%	73%	0%	1.0	
Window 258	Bedroom	77%	77%	0%	1.0	
Window 259	Living/Dining/Kitchen	60%	60%	0%	1.0	
Window 260	Living/Dining/Kitchen	49%	49%	0%	1.0	
Window 261	Bedroom	66%	66%	0%	1.0	
Window 262	Living/Dining	50%	50%	0%	1.0	
Window 263	Bedroom	67%	65%	2%	0.97	
Window 264	Bedroom	59%	58%	1%	0.98	
Window 265	Bedroom	78%	77%	1%	0.99	
Window 266	Bedroom	87%	87%	0%	1.0	
Window 267	Living/Dining/Kitchen	95%	95%	0%	1.0	
Window 268	Living/Dining/Kitchen	97%	97%	0%	1.0	
Window 269	Bedroom	92%	91%	1%	0.99	
Window 270	Bedroom	76%	73%	3%	0.96	
Window 271	Living/Dining/Kitchen	81%	77%	4%	0.95	
Window 272	Bedroom	91%	87%	4%	0.96	
Window 273	Bedroom	47%	47%	0%	1.0	
Window 274	Living/Dining/Kitchen	32%	32%	0%	1.0	

Appendix 2 - Daylight Distribution

Adjacent to East Bay Close, Cardiff CF10 4BA

Reference	Room Use	Daylight Distribution				Result
		Before	After	Loss	Ratio	
Window 275	Bedroom	51%	51%	0%	1.0	
Window 276	Bedroom	43%	43%	0%	1.0	
Window 277	Bedroom	29%	29%	0%	1.0	
Windows 278 & 279	Living/Dining	80%	80%	0%	1.0	
Window 280	Bedroom	90%	88%	2%	0.98	
Window 281	Bedroom	98%	96%	2%	0.98	
Windows 282 to 284	Living/Dining/Kitchen	100%	100%	0%	1.0	
Window 285	Living/Dining/Kitchen	100%	99%	1%	0.99	
Window 286	Bedroom	97%	97%	0%	1.0	
Window 287	Bedroom	97%	97%	0%	1.0	
Window 288	Living/Dining/Kitchen	99%	99%	0%	1.0	
<u>Fourth Floor</u>						
Windows 289 to 291	Living/Dining/Kitchen	100%	100%	0%	1.0	
Window 292	Bedroom	98%	98%	0%	1.0	
Window 293	Bedroom	92%	83%	9%	0.9	
Window 294	Bedroom	93%	92%	1%	0.99	
Window 295	Bedroom	98%	98%	0%	1.0	
Windows 296 & 297	Living/Dining/Kitchen	98%	98%	0%	1.0	
Window 298	Bedroom	82%	82%	0%	1.0	
Window 299	Bedroom	89%	89%	0%	1.0	
Window 300	Living/Dining/Kitchen	74%	74%	0%	1.0	
Window 301	Bedroom	81%	81%	0%	1.0	
Window 302	Living/Dining/Kitchen	64%	64%	0%	1.0	
Window 303	Living/Dining/Kitchen	53%	53%	0%	1.0	
Window 304	Bedroom	73%	73%	0%	1.0	
Window 305	Living/Dining	56%	56%	0%	1.0	
Window 306	Bedroom	67%	67%	0%	1.0	
Window 307	Bedroom	60%	60%	0%	1.0	
Window 308	Bedroom	78%	78%	0%	1.0	
Window 309	Bedroom	89%	89%	0%	1.0	
Window 310	Living/Dining/Kitchen	95%	95%	0%	1.0	
Window 311	Living/Dining/Kitchen	97%	97%	0%	1.0	
Window 312	Bedroom	92%	92%	0%	1.0	
Window 313	Bedroom	78%	75%	3%	0.96	
Window 314	Living/Dining/Kitchen	82%	79%	3%	0.96	
Window 315	Bedroom	91%	88%	3%	0.97	
Window 316	Bedroom	57%	57%	0%	1.0	
Window 317	Living/Dining/Kitchen	40%	40%	0%	1.0	
Window 318	Bedroom	62%	62%	0%	1.0	
Window 319	Bedroom	56%	56%	0%	1.0	
Window 320	Bedroom	41%	41%	0%	1.0	
Windows 321 & 322	Living/Dining/Kitchen	84%	84%	0%	1.0	
Window 323	Bedroom	90%	89%	1%	0.99	

Appendix 2 - Daylight Distribution

Adjacent to East Bay Close, Cardiff CF10 4BA

Reference	Room Use	Daylight Distribution				Result
		Before	After	Loss	Ratio	
Window 324	Bedroom	98%	97%	1%	0.99	
Windows 325 to 327	Living/Dining/Kitchen	100%	100%	0%	1.0	
Window 328	Living/Dining/Kitchen	100%	99%	1%	0.99	
Window 329	Bedroom	97%	97%	0%	1.0	
Window 330	Unknown	97%	97%	0%	1.0	
Window 331	Living/Dining/Kitchen	99%	99%	0%	1.0	
<u>Fifth Floor</u>						
Windows 332 to 334	Kitchen	100%	100%	0%	1.0	
Window 335	Bedroom	98%	98%	0%	1.0	
Window 336	Bedroom	92%	86%	6%	0.93	
Window 337	Bedroom	93%	93%	0%	1.0	
Window 338	Bedroom	98%	98%	0%	1.0	
Windows 339 & 340	Living/Dining/Kitchen	98%	98%	0%	1.0	
Window 341	Bedroom	90%	90%	0%	1.0	
Window 342	Bedroom	92%	92%	0%	1.0	
Window 343	Living/Dining/Kitchen	79%	79%	0%	1.0	
Window 344	Bedroom	86%	86%	0%	1.0	
Window 345	Living/Dining/Kitchen	70%	70%	0%	1.0	
Window 346	Living/Dining/Kitchen	58%	58%	0%	1.0	
Window 347	Bedroom	84%	84%	0%	1.0	
Window 348	Living/Dining	64%	64%	0%	1.0	
Window 349	Bedroom	69%	69%	0%	1.0	
Window 350	Bedroom	62%	62%	0%	1.0	
Window 351	Bedroom	78%	78%	0%	1.0	
Window 352	Bedroom	91%	91%	0%	1.0	
Window 353	Living/Dining/Kitchen	96%	96%	0%	1.0	
Window 354	Living/Dining/Kitchen	97%	97%	0%	1.0	
Window 355	Bedroom	93%	93%	0%	1.0	
Window 356	Bedroom	81%	80%	1%	0.99	
Window 357	Living/Dining/Kitchen	82%	81%	1%	0.99	
Window 358	Bedroom	91%	90%	1%	0.99	
Window 359	Bedroom	73%	73%	0%	1.0	
Window 360	Living/Dining/Kitchen	53%	53%	0%	1.0	
Window 361	Bedroom	79%	79%	0%	1.0	
Window 362	Bedroom	76%	76%	0%	1.0	
Window 363	Bedroom	63%	63%	0%	1.0	
Windows 364 & 365	Living/Dining/Kitchen	89%	89%	0%	1.0	
Window 366	Bedroom	90%	89%	1%	0.99	
Window 367	Bedroom	98%	98%	0%	1.0	
Windows 368 to 370	Living/Dining/Kitchen	100%	100%	0%	1.0	
Window 371	Living/Dining/Kitchen	100%	99%	1%	0.99	
Window 372	Bedroom	97%	97%	0%	1.0	
Window 373	Bedroom	97%	97%	0%	1.0	

Appendix 2 - Daylight Distribution

Adjacent to East Bay Close, Cardiff CF10 4BA

Reference	Room Use	Daylight Distribution				Result
		Before	After	Loss	Ratio	
Window 374	Living/Dining/Kitchen	99%	99%	0%	1.0	
<u>Sixth Floor</u>						
Windows 375 to 377	Living/Dining/Kitchen	100%	100%	0%	1.0	
Window 378	Bedroom	98%	98%	0%	1.0	
Window 379	Bedroom	92%	92%	0%	1.0	
Window 380	Bedroom	93%	93%	0%	1.0	
Window 381	Bedroom	98%	98%	0%	1.0	
Windows 382 & 383	Living/Dining/Kitchen	99%	99%	0%	1.0	
Window 384	Bedroom	95%	95%	0%	1.0	
Window 385	Bedroom	95%	95%	0%	1.0	
Window 386	Living/Dining/Kitchen	84%	84%	0%	1.0	
Window 387	Bedroom	89%	89%	0%	1.0	
Window 388	Living/Dining/Kitchen	79%	79%	0%	1.0	
Window 389	Living/Dining/Kitchen	68%	68%	0%	1.0	
Window 390	Bedroom	96%	96%	0%	1.0	
Window 391	Living/Dining	81%	81%	0%	1.0	
Window 392	Bedroom	71%	71%	0%	1.0	
Window 393	Bedroom	66%	66%	0%	1.0	
Window 394	Bedroom	81%	81%	0%	1.0	
Window 395	Bedroom	95%	95%	0%	1.0	
Window 396	Living/Dining/Kitchen	98%	98%	0%	1.0	
Window 397	Living/Dining/Kitchen	98%	98%	0%	1.0	
Window 398	Bedroom	94%	94%	0%	1.0	
Window 399	Bedroom	87%	87%	0%	1.0	
Window 400	Living/Dining/Kitchen	84%	84%	0%	1.0	
Window 401	Bedroom	92%	92%	0%	1.0	
Window 402	Bedroom	81%	81%	0%	1.0	
Window 403	Living/Dining/Kitchen	72%	72%	0%	1.0	
Window 404	Bedroom	94%	94%	0%	1.0	
Window 405	Bedroom	93%	93%	0%	1.0	
Window 406	Bedroom	86%	86%	0%	1.0	
Windows 407 & 408	Living/Dining/Kitchen	95%	95%	0%	1.0	
Window 409	Bedroom	90%	89%	1%	0.99	
Window 410	Bedroom	98%	98%	0%	1.0	
Windows 411 to 413	Living/Dining/Kitchen	100%	100%	0%	1.0	
Window 414	Living/Dining/Kitchen	100%	99%	1%	0.99	
Window 415	Bedroom	97%	97%	0%	1.0	
Window 416	Bedroom	97%	97%	0%	1.0	
Window 417	Living/Dining/Kitchen	99%	99%	0%	1.0	
<u>Seventh Floor</u>						
Windows 418 to 420	Living/Dining/Kitchen	100%	100%	0%	1.0	
Window 421	Bedroom	98%	98%	0%	1.0	

Appendix 2 - Daylight Distribution

Adjacent to East Bay Close, Cardiff CF10 4BA

Reference	Room Use	Daylight Distribution				Result
		Before	After	Loss	Ratio	
Window 422	Bedroom	92%	92%	0%	1.0	
Window 423	Bedroom	93%	93%	0%	1.0	
Window 424	Bedroom	98%	98%	0%	1.0	
Windows 425 & 426	Living/Dining/Kitchen	99%	99%	0%	1.0	
Window 427	Bedroom	97%	97%	0%	1.0	
Window 428	Bedroom	98%	98%	0%	1.0	
Window 429	Living/Dining/Kitchen	93%	93%	0%	1.0	
Window 430	Bedroom	89%	89%	0%	1.0	
Window 431	Living/Dining/Kitchen	93%	93%	0%	1.0	
Window 432	Living/Dining/Kitchen	90%	90%	0%	1.0	
Window 433	Bedroom	96%	96%	0%	1.0	
Window 434	Living/Dining	95%	95%	0%	1.0	
Window 435	Bedroom	75%	75%	0%	1.0	
Window 436	Bedroom	73%	73%	0%	1.0	
Window 437	Bedroom	89%	89%	0%	1.0	
Window 438	Bedroom	98%	98%	0%	1.0	
Window 439	Living/Dining/Kitchen	99%	99%	0%	1.0	
Window 440	Living/Dining/Kitchen	99%	99%	0%	1.0	
Window 441	Bedroom	98%	98%	0%	1.0	
Window 442	Bedroom	91%	91%	0%	1.0	
Window 443	Living/Dining/Kitchen	88%	88%	0%	1.0	
Window 444	Bedroom	94%	94%	0%	1.0	
Window 445	Bedroom	83%	83%	0%	1.0	
Window 446	Living/Dining/Kitchen	96%	96%	0%	1.0	
Window 447	Bedroom	98%	98%	0%	1.0	
Window 448	Bedroom	97%	97%	0%	1.0	
Window 449	Bedroom	94%	94%	0%	1.0	
Windows 450 & 451	Living/Dining/Kitchen	100%	100%	0%	1.0	
Window 452	Bedroom	90%	90%	0%	1.0	
Window 453	Bedroom	98%	98%	0%	1.0	
Windows 454 to 456	Living/Dining/Kitchen	100%	100%	0%	1.0	
Window 457	Living/Dining/Kitchen	100%	100%	0%	1.0	
Window 458	Bedroom	97%	97%	0%	1.0	
Window 459	Bedroom	97%	97%	0%	1.0	
Window 460	Living/Dining/Kitchen	99%	99%	0%	1.0	
<u>Eighth Floor</u>						
Windows 461 to 463	Living/Dining/Kitchen	100%	100%	0%	1.0	
Window 464	Bedroom	98%	98%	0%	1.0	
Window 465	Bedroom	92%	92%	0%	1.0	
Window 466	Bedroom	93%	93%	0%	1.0	
Window 467	Bedroom	98%	98%	0%	1.0	
Windows 468 & 469	Living/Dining/Kitchen	99%	99%	0%	1.0	
Window 470	Bedroom	97%	97%	0%	1.0	

Appendix 2 - Daylight Distribution

Adjacent to East Bay Close, Cardiff CF10 4BA

Reference	Room Use	Daylight Distribution				Result
		Before	After	Loss	Ratio	
Window 471	Bedroom	98%	98%	0%	1.0	
Window 472	Living/Dining/Kitchen	99%	99%	0%	1.0	
Window 473	Bedroom	89%	89%	0%	1.0	
Window 474	Living/Dining/Kitchen	99%	99%	0%	1.0	
Window 475	Living/Dining/Kitchen	100%	100%	0%	1.0	
Window 476	Bedroom	96%	96%	0%	1.0	
Window 477	Living/Dining	96%	96%	0%	1.0	
Window 478	Bedroom	77%	77%	0%	1.0	
Window 479	Bedroom	89%	89%	0%	1.0	
Window 480	Bedroom	90%	90%	0%	1.0	
Window 481	Bedroom	98%	98%	0%	1.0	
Window 482	Living/Dining/Kitchen	99%	99%	0%	1.0	
Window 483	Living/Dining/Kitchen	99%	99%	0%	1.0	
Window 484	Bedroom	98%	98%	0%	1.0	
Window 485	Bedroom	91%	91%	0%	1.0	
Window 486	Living/Dining/Kitchen	97%	97%	0%	1.0	
Window 487	Bedroom	94%	94%	0%	1.0	
Window 488	Bedroom	83%	83%	0%	1.0	
Window 489	Living/Dining/Kitchen	99%	99%	0%	1.0	
Window 490	Bedroom	98%	98%	0%	1.0	
Window 491	Bedroom	97%	97%	0%	1.0	
Window 492	Bedroom	94%	94%	0%	1.0	
Windows 493 & 494	Living/Dining/Kitchen	100%	100%	0%	1.0	
Window 495	Bedroom	90%	90%	0%	1.0	
Window 496	Bedroom	98%	98%	0%	1.0	
Windows 497 to 499	Living/Dining/Kitchen	100%	100%	0%	1.0	
Window 500	Living/Dining/Kitchen	100%	100%	0%	1.0	
Window 501	Bedroom	97%	97%	0%	1.0	
Window 502	Bedroom	97%	97%	0%	1.0	
Window 503	Living/Dining/Kitchen	99%	99%	0%	1.0	
<u>Ninth Floor</u>						
Windows 504 to 506	Living/Dining/Kitchen	100%	100%	0%	1.0	
Window 507	Bedroom	98%	98%	0%	1.0	
Window 508	Bedroom	93%	93%	0%	1.0	
Window 509	Bedroom	92%	92%	0%	1.0	
Window 510	Bedroom	98%	98%	0%	1.0	
Windows 511 & 512	Living/Dining/Kitchen	99%	99%	0%	1.0	
Window 513	Bedroom	97%	97%	0%	1.0	
Window 514	Bedroom	98%	98%	0%	1.0	
Window 515	Living/Dining/Kitchen	99%	99%	0%	1.0	
Window 516	Bedroom	92%	92%	0%	1.0	
Window 517	Living/Dining/Kitchen	100%	100%	0%	1.0	
Window 518	Living/Dining/Kitchen	100%	100%	0%	1.0	

Appendix 2 - Daylight Distribution
Adjacent to East Bay Close, Cardiff CF10 4BA

Reference	Room Use	Daylight Distribution				Result
		Before	After	Loss	Ratio	
Window 519	Bedroom	96%	96%	0%	1.0	
Windows 520 to 522	Amiity Area	100%	100%	0%	1.0	
Windows 523 & 524	Amiity Area	98%	98%	0%	1.0	
Window 525	Living/Dining/Kitchen	99%	99%	0%	1.0	
Window 526	Bedroom	98%	98%	0%	1.0	
Window 527	Bedroom	97%	97%	0%	1.0	
Window 528	Bedroom	94%	94%	0%	1.0	
Windows 529 & 530	Living/Dining/Kitchen	100%	100%	0%	1.0	
Window 531	Bedroom	89%	89%	0%	1.0	
Window 532	Bedroom	98%	98%	0%	1.0	
Windows 533 to 535	Living/Dining/Kitchen	100%	100%	0%	1.0	
Window 536	Living/Dining/Kitchen	100%	100%	0%	1.0	
Window 537	Bedroom	97%	97%	0%	1.0	
Window 538	Bedroom	97%	97%	0%	1.0	
Window 539	Living/Dining/Kitchen	99%	99%	0%	1.0	

Appendix 2 - Sunlight to Windows
Adjacent to East Bay Close, Cardiff CF10 4BA

Reference	Room Use	Sunlight to Windows								Result
		Total Sunlight Hours				Winter Sunlight Hours				
		Before	After	Loss	Ratio	Before	After	Loss	Ratio	
<u>33 Tyndall Street</u>										
<u>Ground Floor</u>										
Window 19	Outbuilding	63%	63%	0%	1.0	15%	15%	0%	1.0	
Window 20	Outbuilding	61%	61%	0%	1.0	15%	15%	0%	1.0	
Window 21	Outbuilding	61%	61%	0%	1.0	16%	16%	0%	1.0	
<u>Cardiff Theatrical Services Ltd</u>										
<u>Ground Floor</u>										
Window 39	Non Domestic	49%	49%	0%	1.0	20%	20%	0%	1.0	
Window 40	Non Domestic	79%	75%	4%	0.95	26%	26%	0%	1.0	
Window 41	Non Domestic	63%	63%	0%	1.0	24%	24%	0%	1.0	
Window 42	Non Domestic	50%	36%	14%	0.72	9%	9%	0%	1.0	
Window 53	Non Domestic	56%	56%	0%	1.0	17%	17%	0%	1.0	
Window 54	Non Domestic	55%	55%	0%	1.0	17%	17%	0%	1.0	
Window 55	Non Domestic	54%	54%	0%	1.0	17%	17%	0%	1.0	
Window 56	Non Domestic	54%	54%	0%	1.0	17%	17%	0%	1.0	
Window 57	Non Domestic	55%	55%	0%	1.0	18%	18%	0%	1.0	
Window 58	Non Domestic	54%	54%	0%	1.0	17%	17%	0%	1.0	
Window 59	Non Domestic	54%	54%	0%	1.0	17%	17%	0%	1.0	
Window 60	Non Domestic	57%	57%	0%	1.0	19%	19%	0%	1.0	
Window 61	Non Domestic	56%	56%	0%	1.0	18%	18%	0%	1.0	
Window 62	Non Domestic	56%	56%	0%	1.0	18%	18%	0%	1.0	
Window 63	Non Domestic	98%	95%	3%	0.97	29%	29%	0%	1.0	
Window 64	Non Domestic	98%	95%	3%	0.97	29%	29%	0%	1.0	
Window 65	Non Domestic	98%	95%	3%	0.97	29%	29%	0%	1.0	
Window 66	Non Domestic	97%	95%	2%	0.98	28%	28%	0%	1.0	
Window 67	Non Domestic	97%	95%	2%	0.98	28%	28%	0%	1.0	
Window 68	Non Domestic	97%	95%	2%	0.98	28%	28%	0%	1.0	
Window 69	Non Domestic	97%	91%	6%	0.94	28%	28%	0%	1.0	
Window 70	Non Domestic	96%	88%	8%	0.92	27%	27%	0%	1.0	
Window 71	Non Domestic	95%	82%	13%	0.86	26%	24%	2%	0.92	
Window 72	Non Domestic	94%	79%	15%	0.84	25%	24%	1%	0.96	
Window 73	Non Domestic	96%	72%	24%	0.75	27%	23%	4%	0.85	
Window 74	Non Domestic	97%	96%	1%	0.99	28%	28%	0%	1.0	
Window 75	Non Domestic	97%	95%	2%	0.98	28%	28%	0%	1.0	
Window 76	Non Domestic	98%	96%	2%	0.98	29%	29%	0%	1.0	
Window 77	Non Domestic	97%	95%	2%	0.98	28%	28%	0%	1.0	
Window 78	Non Domestic	98%	95%	3%	0.97	29%	29%	0%	1.0	
Window 79	Non Domestic	98%	91%	7%	0.93	29%	28%	1%	0.97	
Window 80	Non Domestic	97%	86%	11%	0.89	28%	27%	1%	0.96	
Window 81	Non Domestic	98%	79%	19%	0.81	29%	25%	4%	0.86	
Window 82	Non Domestic	97%	74%	23%	0.76	28%	23%	5%	0.82	
Window 96	Non Domestic	0%	0%	0%	1.0	0%	0%	0%	1.0	
Window 101	Non Domestic	96%	91%	5%	0.95	27%	27%	0%	1.0	

Appendix 2 - Sunlight to Windows
Adjacent to East Bay Close, Cardiff CF10 4BA

Reference	Room Use	Sunlight to Windows								Result
		Total Sunlight Hours				Winter Sunlight Hours				
		Before	After	Loss	Ratio	Before	After	Loss	Ratio	
Window 102	Non Domestic	97%	92%	5%	0.95	28%	28%	0%	1.0	
Window 103	Non Domestic	97%	90%	7%	0.93	28%	26%	2%	0.93	
Window 104	Non Domestic	96%	90%	6%	0.94	29%	27%	2%	0.93	
Window 105	Non Domestic	96%	86%	10%	0.9	29%	27%	2%	0.93	
Window 106	Non Domestic	96%	85%	11%	0.89	30%	27%	3%	0.9	
Window 107	Non Domestic	94%	82%	12%	0.87	29%	26%	3%	0.9	
Window 108	Non Domestic	95%	76%	19%	0.8	30%	24%	6%	0.8	
Window 109	Non Domestic	94%	69%	25%	0.73	29%	24%	5%	0.83	
Window 110	Non Domestic	97%	95%	2%	0.98	28%	28%	0%	1.0	
Window 111	Non Domestic	95%	94%	1%	0.99	27%	27%	0%	1.0	
Window 112	Non Domestic	96%	93%	3%	0.97	28%	27%	1%	0.96	
Window 113	Non Domestic	97%	93%	4%	0.96	30%	28%	2%	0.93	
Window 114	Non Domestic	96%	89%	7%	0.93	29%	27%	2%	0.93	
Window 115	Non Domestic	97%	87%	10%	0.9	30%	27%	3%	0.9	
Window 116	Non Domestic	94%	84%	10%	0.89	29%	27%	2%	0.93	
Window 117	Non Domestic	95%	79%	16%	0.83	30%	26%	4%	0.87	
Window 118	Non Domestic	95%	73%	22%	0.77	30%	24%	6%	0.8	
Window 119	Non Domestic	94%	68%	26%	0.72	29%	24%	5%	0.83	

1 East Bay Close (Neighbour Proposal)

Ground Floor

Window 143	Bin Store	12%	11%	1%	0.92	3%	2%	1%	0.67	
Window 144	Bin Store	14%	13%	1%	0.93	3%	2%	1%	0.67	
Window 145	Plant	11%	10%	1%	0.91	2%	1%	1%	0.5	
Window 146	Plant	11%	7%	4%	0.64	4%	1%	3%	0.25	
Window 147	Entrance Lobby & Staircase	6%	6%	0%	1.0	4%	4%	0%	1.0	
Window 148	Bedroom	20%	20%	0%	1.0	7%	7%	0%	1.0	
Window 149	Living/Dining/Kitchen	26%	26%	0%	1.0	7%	7%	0%	1.0	
Window 150	Living/Dining/Kitchen	26%	26%	0%	1.0	6%	6%	0%	1.0	
Window 151	Bedroom	28%	28%	0%	1.0	8%	8%	0%	1.0	
Window 152	Living/Dining	29%	28%	1%	0.97	8%	7%	1%	0.88	
Window 153	Bedroom	27%	25%	2%	0.93	8%	6%	2%	0.75	
Window 154	Bedroom	27%	23%	4%	0.85	8%	4%	4%	0.5	
Window 155	Bedroom	27%	24%	3%	0.89	5%	2%	3%	0.4	
Window 156	Bedroom	27%	24%	3%	0.89	5%	2%	3%	0.4	
Window 157	Living/Dining/Kitchen	27%	24%	3%	0.89	5%	2%	3%	0.4	
Window 158	Living/Dining/Kitchen	20%	17%	3%	0.85	3%	1%	2%	0.33	
Window 159	Bedroom	20%	17%	3%	0.85	3%	1%	2%	0.33	
Window 160	Bedroom	17%	15%	2%	0.88	2%	1%	1%	0.5	
Window 161	Living/Dining/Kitchen	11%	11%	0%	1.0	1%	1%	0%	1.0	
Window 162	Bedroom	8%	8%	0%	1.0	1%	1%	0%	1.0	
Window 169	Entrance Lobby & Staircase	7%	5%	2%	0.71	7%	5%	2%	0.71	
Window 170	Bin Store	54%	54%	0%	1.0	17%	17%	0%	1.0	
Window 171	Bin Store	60%	60%	0%	1.0	22%	22%	0%	1.0	

Appendix 2 - Sunlight to Windows
Adjacent to East Bay Close, Cardiff CF10 4BA

Reference	Room Use	Sunlight to Windows								Result
		Total Sunlight Hours				Winter Sunlight Hours				
		Before	After	Loss	Ratio	Before	After	Loss	Ratio	
First Floor										
Window 174	Living/Dining/Kitchen	14%	13%	1%	0.93	3%	2%	1%	0.67	Fail
Window 175	Bedroom	14%	12%	2%	0.86	4%	2%	2%	0.5	
Window 176	Bedroom	12%	12%	0%	1.0	2%	2%	0%	1.0	
Window 177	Residential Aminity	13%	12%	1%	0.92	3%	2%	1%	0.67	
Window 178	Residential Aminity	11%	9%	2%	0.82	2%	0%	2%	0.0	
Window 179	Residential Aminity	12%	9%	3%	0.75	3%	0%	3%	0.0	
Window 180	Bedroom	23%	23%	0%	1.0	9%	9%	0%	1.0	
Window 181	Living/Dining/Kitchen	26%	26%	0%	1.0	8%	8%	0%	1.0	
Window 182	Living/Dining/Kitchen	30%	27%	3%	0.9	9%	6%	3%	0.67	
Window 183	Bedroom	32%	30%	2%	0.94	10%	8%	2%	0.8	
Window 184	Living/Dining	32%	29%	3%	0.91	10%	7%	3%	0.7	Fail
Window 185	Bedroom	28%	25%	3%	0.89	8%	5%	3%	0.63	
Window 186	Bedroom	29%	26%	3%	0.9	8%	5%	3%	0.63	
Window 187	Bedroom	18%	13%	5%	0.72	6%	2%	4%	0.33	
Window 188	Bedroom	19%	14%	5%	0.74	6%	2%	4%	0.33	
Window 189	Living/Dining/Kitchen	19%	15%	4%	0.79	5%	2%	3%	0.4	
Window 190	Living/Dining/Kitchen	16%	14%	2%	0.88	3%	1%	2%	0.33	
Window 191	Bedroom	19%	16%	3%	0.84	4%	2%	2%	0.5	
Window 192	Bedroom	16%	14%	2%	0.88	3%	2%	1%	0.67	
Window 193	Living/Dining/Kitchen	13%	13%	0%	1.0	1%	1%	0%	1.0	
Window 194	Bedroom	10%	10%	0%	1.0	1%	1%	0%	1.0	
Window 201	Living/Dining/Kitchen	19%	17%	2%	0.89	3%	2%	1%	0.67	
Window 202	Living/Dining/Kitchen	17%	15%	2%	0.88	1%	0%	1%	0.0	
Second Floor										
Window 205	Living/Dining/Kitchen	20%	20%	0%	1.0	4%	4%	0%	1.0	
Window 206	Bedroom	19%	19%	0%	1.0	4%	4%	0%	1.0	
Window 207	Bedroom	17%	17%	0%	1.0	4%	4%	0%	1.0	
Window 208	Bedroom	16%	16%	0%	1.0	4%	4%	0%	1.0	
Window 209	Bedroom	15%	15%	0%	1.0	3%	3%	0%	1.0	
Window 210	Living/Dining/Kitchen	15%	15%	0%	1.0	7%	7%	0%	1.0	
Window 211	Living/Dining/Kitchen	20%	19%	1%	0.95	12%	11%	1%	0.92	
Window 212	Bedroom	40%	38%	2%	0.95	13%	11%	2%	0.85	
Window 213	Bedroom	30%	27%	3%	0.9	13%	10%	3%	0.77	
Window 214	Living/Dining/Kitchen	16%	15%	1%	0.94	12%	11%	1%	0.92	
Window 215	Bedroom	15%	15%	0%	1.0	5%	5%	0%	1.0	
Window 216	Living/Dining/Kitchen	32%	29%	3%	0.91	12%	9%	3%	0.75	
Window 217	Living/Dining/Kitchen	33%	30%	3%	0.91	10%	7%	3%	0.7	
Window 218	Bedroom	34%	32%	2%	0.94	11%	9%	2%	0.82	
Window 219	Living/Dining	33%	31%	2%	0.94	10%	8%	2%	0.8	
Window 220	Bedroom	29%	27%	2%	0.93	8%	6%	2%	0.75	
Window 221	Bedroom	29%	26%	3%	0.9	8%	5%	3%	0.63	

Appendix 2 - Sunlight to Windows
Adjacent to East Bay Close, Cardiff CF10 4BA

		Sunlight to Windows								
Reference	Room Use	Total Sunlight Hours				Winter Sunlight Hours				Result
		Before	After	Loss	Ratio	Before	After	Loss	Ratio	
Window 222	Bedroom	19%	14%	5%	0.74	7%	3%	4%	0.43	Fail
Window 223	Bedroom	20%	15%	5%	0.75	7%	3%	4%	0.43	Fail
Window 224	Living/Dining/Kitchen	20%	15%	5%	0.75	6%	2%	4%	0.33	Fail
Window 225	Living/Dining/Kitchen	18%	16%	2%	0.89	4%	2%	2%	0.5	
Window 226	Bedroom	19%	18%	1%	0.95	4%	3%	1%	0.75	
Window 227	Bedroom	17%	16%	1%	0.94	3%	2%	1%	0.67	
Window 228	Living/Dining/Kitchen	14%	14%	0%	1.0	1%	1%	0%	1.0	
Window 229	Bedroom	11%	10%	1%	0.91	1%	0%	1%	0.0	
Window 236	Living/Dining/Kitchen	45%	42%	3%	0.93	12%	12%	0%	1.0	
Window 237	Bedroom	45%	42%	3%	0.93	12%	12%	0%	1.0	
Window 238	Bedroom	45%	42%	3%	0.93	12%	12%	0%	1.0	
Window 239	Living/Dining/Kitchen	44%	42%	2%	0.95	12%	12%	0%	1.0	
Window 240	Living/Dining/Kitchen	47%	46%	1%	0.98	22%	21%	1%	0.95	
Window 241	Living/Dining/Kitchen	52%	51%	1%	0.98	24%	23%	1%	0.96	
Window 242	Living/Dining/Kitchen	69%	68%	1%	0.99	24%	23%	1%	0.96	
Window 243	Bedroom	74%	71%	3%	0.96	26%	23%	3%	0.88	
Window 244	Bedroom	76%	74%	2%	0.97	26%	24%	2%	0.92	
Window 245	Living/Dining/Kitchen	65%	64%	1%	0.98	26%	25%	1%	0.96	
Third Floor										
Window 248	Living/Dining/Kitchen	34%	34%	0%	1.0	9%	9%	0%	1.0	
Window 249	Bedroom	32%	32%	0%	1.0	8%	8%	0%	1.0	
Window 250	Bedroom	32%	32%	0%	1.0	8%	8%	0%	1.0	
Window 251	Bedroom	28%	28%	0%	1.0	6%	6%	0%	1.0	
Window 252	Bedroom	24%	24%	0%	1.0	5%	5%	0%	1.0	
Window 253	Living/Dining/Kitchen	25%	24%	1%	0.96	12%	11%	1%	0.92	
Window 254	Living/Dining/Kitchen	24%	21%	3%	0.88	15%	12%	3%	0.8	
Window 255	Bedroom	46%	42%	4%	0.91	18%	14%	4%	0.78	
Window 256	Bedroom	37%	33%	4%	0.89	18%	14%	4%	0.78	
Window 257	Living/Dining/Kitchen	21%	17%	4%	0.81	15%	11%	4%	0.73	
Window 258	Bedroom	17%	17%	0%	1.0	5%	5%	0%	1.0	
Window 259	Living/Dining/Kitchen	34%	30%	4%	0.88	13%	9%	4%	0.69	
Window 260	Living/Dining/Kitchen	36%	32%	4%	0.89	11%	7%	4%	0.64	
Window 261	Bedroom	36%	33%	3%	0.92	12%	9%	3%	0.75	
Window 262	Living/Dining	35%	32%	3%	0.91	11%	8%	3%	0.73	
Window 263	Bedroom	30%	27%	3%	0.9	10%	7%	3%	0.7	
Window 264	Bedroom	31%	28%	3%	0.9	10%	7%	3%	0.7	
Window 265	Bedroom	20%	17%	3%	0.85	8%	5%	3%	0.63	
Window 266	Bedroom	21%	17%	4%	0.81	8%	4%	4%	0.5	
Window 267	Living/Dining/Kitchen	21%	16%	5%	0.76	7%	2%	5%	0.29	Fail
Window 268	Living/Dining/Kitchen	19%	16%	3%	0.84	5%	2%	3%	0.4	
Window 269	Bedroom	20%	19%	1%	0.95	4%	3%	1%	0.75	
Window 270	Bedroom	19%	18%	1%	0.95	3%	2%	1%	0.67	
Window 271	Living/Dining/Kitchen	16%	15%	1%	0.94	1%	1%	0%	1.0	

Appendix 2 - Sunlight to Windows
Adjacent to East Bay Close, Cardiff CF10 4BA

Reference	Room Use	Sunlight to Windows								Result
		Total Sunlight Hours				Winter Sunlight Hours				
		Before	After	Loss	Ratio	Before	After	Loss	Ratio	
Window 272	Bedroom	12%	10%	2%	0.83	1%	0%	1%	0.0	
Window 279	Living/Dining	55%	46%	9%	0.84	17%	15%	2%	0.88	
Window 280	Bedroom	55%	48%	7%	0.87	17%	15%	2%	0.88	
Window 281	Bedroom	55%	48%	7%	0.87	17%	15%	2%	0.88	
Window 282	Living/Dining/Kitchen	55%	48%	7%	0.87	17%	14%	3%	0.82	
Window 283	Living/Dining/Kitchen	51%	48%	3%	0.94	26%	23%	3%	0.88	
Window 284	Living/Dining/Kitchen	53%	51%	2%	0.96	25%	23%	2%	0.92	
Window 285	Living/Dining/Kitchen	71%	69%	2%	0.97	26%	24%	2%	0.92	
Window 286	Bedroom	75%	73%	2%	0.97	27%	25%	2%	0.93	
Window 287	Bedroom	77%	76%	1%	0.99	27%	26%	1%	0.96	
Window 288	Living/Dining/Kitchen	66%	65%	1%	0.98	27%	26%	1%	0.96	
Fourth Floor										
Window 291	Living/Dining/Kitchen	58%	52%	6%	0.9	18%	12%	6%	0.67	
Window 292	Bedroom	57%	50%	7%	0.88	17%	10%	7%	0.59	
Window 293	Bedroom	57%	51%	6%	0.89	17%	11%	6%	0.65	
Window 294	Bedroom	57%	50%	7%	0.88	17%	11%	6%	0.65	
Window 295	Bedroom	56%	48%	8%	0.86	17%	11%	6%	0.65	
Window 296	Living/Dining/Kitchen	37%	32%	5%	0.86	20%	15%	5%	0.75	
Window 297	Living/Dining/Kitchen	34%	28%	6%	0.82	20%	14%	6%	0.7	
Window 298	Bedroom	50%	45%	5%	0.9	20%	15%	5%	0.75	
Window 299	Bedroom	40%	38%	2%	0.95	20%	18%	2%	0.9	
Window 300	Living/Dining/Kitchen	25%	21%	4%	0.84	17%	13%	4%	0.76	
Window 301	Bedroom	20%	20%	0%	1.0	6%	6%	0%	1.0	
Window 302	Living/Dining/Kitchen	36%	34%	2%	0.94	13%	11%	2%	0.85	
Window 303	Living/Dining/Kitchen	38%	36%	2%	0.95	14%	12%	2%	0.86	
Window 304	Bedroom	40%	38%	2%	0.95	15%	13%	2%	0.87	
Window 305	Living/Dining	37%	35%	2%	0.95	13%	11%	2%	0.85	
Window 306	Bedroom	34%	32%	2%	0.94	13%	11%	2%	0.85	
Window 307	Bedroom	33%	30%	3%	0.91	12%	9%	3%	0.75	
Window 308	Bedroom	22%	17%	5%	0.77	10%	5%	5%	0.5	
Window 309	Bedroom	23%	17%	6%	0.74	10%	4%	6%	0.4	
Window 310	Living/Dining/Kitchen	23%	17%	6%	0.74	9%	3%	6%	0.33	
Window 311	Living/Dining/Kitchen	21%	18%	3%	0.86	7%	4%	3%	0.57	
Window 312	Bedroom	22%	21%	1%	0.95	6%	5%	1%	0.83	
Window 313	Bedroom	21%	20%	1%	0.95	5%	4%	1%	0.8	
Window 314	Living/Dining/Kitchen	17%	16%	1%	0.94	2%	2%	0%	1.0	
Window 315	Bedroom	13%	11%	2%	0.85	2%	1%	1%	0.5	
Window 322	Living/Dining/Kitchen	62%	52%	10%	0.84	21%	17%	4%	0.81	
Window 323	Bedroom	62%	52%	10%	0.84	21%	16%	5%	0.76	
Window 324	Bedroom	62%	51%	11%	0.82	21%	15%	6%	0.71	
Window 325	Living/Dining/Kitchen	62%	53%	9%	0.85	21%	16%	5%	0.76	
Window 326	Living/Dining/Kitchen	53%	50%	3%	0.94	28%	25%	3%	0.89	
Window 327	Living/Dining/Kitchen	55%	52%	3%	0.95	27%	24%	3%	0.89	

Appendix 2 - Sunlight to Windows
Adjacent to East Bay Close, Cardiff CF10 4BA

Reference	Room Use	Sunlight to Windows								Result
		Total Sunlight Hours				Winter Sunlight Hours				
		Before	After	Loss	Ratio	Before	After	Loss	Ratio	
Window 328	Living/Dining/Kitchen	71%	68%	3%	0.96	27%	24%	3%	0.89	
Window 329	Bedroom	76%	73%	3%	0.96	28%	25%	3%	0.89	
Window 330	Unknown	77%	76%	1%	0.99	28%	27%	1%	0.96	
Window 331	Living/Dining/Kitchen	67%	66%	1%	0.99	28%	27%	1%	0.96	
Fifth Floor										
Window 334	Kitchen	62%	55%	7%	0.89	21%	14%	7%	0.67	
Window 335	Bedroom	62%	54%	8%	0.87	21%	13%	8%	0.62	
Window 336	Bedroom	62%	55%	7%	0.89	21%	14%	7%	0.67	
Window 337	Bedroom	62%	55%	7%	0.89	21%	14%	7%	0.67	
Window 338	Bedroom	62%	53%	9%	0.85	21%	13%	8%	0.62	
Window 339	Living/Dining/Kitchen	39%	35%	4%	0.9	22%	18%	4%	0.82	
Window 340	Living/Dining/Kitchen	37%	33%	4%	0.89	21%	17%	4%	0.81	
Window 341	Bedroom	53%	50%	3%	0.94	21%	18%	3%	0.86	
Window 342	Bedroom	41%	39%	2%	0.95	21%	19%	2%	0.9	
Window 343	Living/Dining/Kitchen	30%	28%	2%	0.93	19%	17%	2%	0.89	
Window 344	Bedroom	23%	23%	0%	1.0	7%	7%	0%	1.0	
Window 345	Living/Dining/Kitchen	38%	37%	1%	0.97	14%	13%	1%	0.93	
Window 346	Living/Dining/Kitchen	43%	41%	2%	0.95	16%	14%	2%	0.88	
Window 347	Bedroom	45%	43%	2%	0.96	17%	15%	2%	0.88	
Window 348	Living/Dining	38%	36%	2%	0.95	14%	12%	2%	0.86	
Window 349	Bedroom	37%	35%	2%	0.95	14%	12%	2%	0.86	
Window 350	Bedroom	35%	32%	3%	0.91	13%	10%	3%	0.77	
Window 351	Bedroom	22%	17%	5%	0.77	10%	5%	5%	0.5	
Window 352	Bedroom	24%	19%	5%	0.79	10%	5%	5%	0.5	
Window 353	Living/Dining/Kitchen	25%	20%	5%	0.8	9%	4%	5%	0.44	
Window 354	Living/Dining/Kitchen	23%	20%	3%	0.87	7%	4%	3%	0.57	
Window 355	Bedroom	22%	21%	1%	0.95	6%	5%	1%	0.83	
Window 356	Bedroom	25%	24%	1%	0.96	5%	4%	1%	0.8	
Window 357	Living/Dining/Kitchen	18%	17%	1%	0.94	2%	2%	0%	1.0	
Window 358	Bedroom	14%	12%	2%	0.86	2%	1%	1%	0.5	
Window 365	Living/Dining/Kitchen	62%	54%	8%	0.87	21%	17%	4%	0.81	
Window 366	Bedroom	62%	53%	9%	0.85	21%	16%	5%	0.76	
Window 367	Bedroom	62%	53%	9%	0.85	21%	16%	5%	0.76	
Window 368	Living/Dining/Kitchen	62%	54%	8%	0.87	21%	16%	5%	0.76	
Window 369	Living/Dining/Kitchen	53%	50%	3%	0.94	28%	25%	3%	0.89	
Window 370	Living/Dining/Kitchen	55%	53%	2%	0.96	27%	25%	2%	0.93	
Window 371	Living/Dining/Kitchen	71%	69%	2%	0.97	27%	25%	2%	0.93	
Window 372	Bedroom	76%	75%	1%	0.99	28%	27%	1%	0.96	
Window 373	Bedroom	77%	76%	1%	0.99	28%	27%	1%	0.96	
Window 374	Living/Dining/Kitchen	68%	67%	1%	0.99	28%	27%	1%	0.96	

Appendix 2 - Sunlight to Windows
Adjacent to East Bay Close, Cardiff CF10 4BA

Reference	Room Use	Sunlight to Windows								Result
		Total Sunlight Hours				Winter Sunlight Hours				
		Before	After	Loss	Ratio	Before	After	Loss	Ratio	
<u>Sixth Floor</u>										
Window 377	Living/Dining/Kitchen	62%	57%	5%	0.92	21%	16%	5%	0.76	
Window 378	Bedroom	62%	56%	6%	0.9	21%	15%	6%	0.71	
Window 379	Bedroom	62%	58%	4%	0.94	21%	17%	4%	0.81	
Window 380	Bedroom	62%	58%	4%	0.94	21%	17%	4%	0.81	
Window 381	Bedroom	62%	55%	7%	0.89	21%	14%	7%	0.67	
Window 382	Living/Dining/Kitchen	44%	41%	3%	0.93	25%	22%	3%	0.88	
Window 383	Living/Dining/Kitchen	39%	36%	3%	0.92	22%	19%	3%	0.86	
Window 384	Bedroom	54%	51%	3%	0.94	22%	19%	3%	0.86	
Window 385	Bedroom	41%	39%	2%	0.95	21%	19%	2%	0.9	
Window 386	Living/Dining/Kitchen	33%	31%	2%	0.94	19%	17%	2%	0.89	
Window 387	Bedroom	30%	30%	0%	1.0	7%	7%	0%	1.0	
Window 388	Living/Dining/Kitchen	45%	44%	1%	0.98	15%	14%	1%	0.93	
Window 389	Living/Dining/Kitchen	49%	47%	2%	0.96	18%	16%	2%	0.89	
Window 390	Bedroom	50%	49%	1%	0.98	19%	18%	1%	0.95	
Window 391	Living/Dining	43%	41%	2%	0.95	17%	15%	2%	0.88	
Window 392	Bedroom	40%	38%	2%	0.95	15%	13%	2%	0.87	
Window 393	Bedroom	39%	36%	3%	0.92	13%	10%	3%	0.77	
Window 394	Bedroom	26%	23%	3%	0.88	12%	9%	3%	0.75	
Window 395	Bedroom	25%	22%	3%	0.88	11%	8%	3%	0.73	
Window 396	Living/Dining/Kitchen	28%	26%	2%	0.93	10%	8%	2%	0.8	
Window 397	Living/Dining/Kitchen	24%	23%	1%	0.96	8%	7%	1%	0.88	
Window 398	Bedroom	23%	22%	1%	0.96	6%	5%	1%	0.83	
Window 399	Bedroom	31%	30%	1%	0.97	5%	4%	1%	0.8	
Window 400	Living/Dining/Kitchen	19%	19%	0%	1.0	2%	2%	0%	1.0	
Window 401	Bedroom	15%	14%	1%	0.93	2%	1%	1%	0.5	
Window 408	Living/Dining/Kitchen	62%	57%	5%	0.92	21%	18%	3%	0.86	
Window 409	Bedroom	62%	56%	6%	0.9	21%	17%	4%	0.81	
Window 410	Bedroom	62%	56%	6%	0.9	21%	16%	5%	0.76	
Window 411	Living/Dining/Kitchen	62%	57%	5%	0.92	21%	17%	4%	0.81	
Window 412	Living/Dining/Kitchen	53%	51%	2%	0.96	28%	26%	2%	0.93	
Window 413	Living/Dining/Kitchen	55%	53%	2%	0.96	27%	25%	2%	0.93	
Window 414	Living/Dining/Kitchen	71%	70%	1%	0.99	27%	26%	1%	0.96	
Window 415	Bedroom	77%	76%	1%	0.99	28%	27%	1%	0.96	
Window 416	Bedroom	78%	77%	1%	0.99	28%	27%	1%	0.96	
Window 417	Living/Dining/Kitchen	69%	68%	1%	0.99	28%	27%	1%	0.96	
<u>Seventh Floor</u>										
Window 420	Living/Dining/Kitchen	62%	58%	4%	0.94	21%	17%	4%	0.81	
Window 421	Bedroom	62%	58%	4%	0.94	21%	17%	4%	0.81	
Window 422	Bedroom	62%	60%	2%	0.97	21%	19%	2%	0.9	
Window 423	Bedroom	62%	59%	3%	0.95	21%	18%	3%	0.86	
Window 424	Bedroom	62%	57%	5%	0.92	21%	16%	5%	0.76	

Appendix 2 - Sunlight to Windows
Adjacent to East Bay Close, Cardiff CF10 4BA

Reference	Room Use	Sunlight to Windows								Result
		Total Sunlight Hours				Winter Sunlight Hours				
		Before	After	Loss	Ratio	Before	After	Loss	Ratio	
Window 425	Living/Dining/Kitchen	45%	43%	2%	0.96	25%	23%	2%	0.92	
Window 426	Living/Dining/Kitchen	46%	44%	2%	0.96	24%	22%	2%	0.92	
Window 427	Bedroom	59%	57%	2%	0.97	24%	22%	2%	0.92	
Window 428	Bedroom	50%	49%	1%	0.98	24%	23%	1%	0.96	
Window 429	Living/Dining/Kitchen	38%	37%	1%	0.97	21%	20%	1%	0.95	
Window 430	Bedroom	34%	34%	0%	1.0	9%	9%	0%	1.0	
Window 431	Living/Dining/Kitchen	52%	51%	1%	0.98	16%	15%	1%	0.94	
Window 432	Living/Dining/Kitchen	55%	54%	1%	0.98	20%	19%	1%	0.95	
Window 433	Bedroom	55%	54%	1%	0.98	20%	19%	1%	0.95	
Window 434	Living/Dining	46%	45%	1%	0.98	18%	17%	1%	0.94	
Window 435	Bedroom	42%	41%	1%	0.98	17%	16%	1%	0.94	
Window 436	Bedroom	44%	42%	2%	0.95	17%	15%	2%	0.88	
Window 437	Bedroom	51%	49%	2%	0.96	17%	15%	2%	0.88	
Window 438	Bedroom	51%	49%	2%	0.96	16%	14%	2%	0.88	
Window 439	Living/Dining/Kitchen	49%	47%	2%	0.96	14%	12%	2%	0.86	
Window 440	Living/Dining/Kitchen	48%	47%	1%	0.98	11%	10%	1%	0.91	
Window 441	Bedroom	45%	44%	1%	0.98	7%	6%	1%	0.86	
Window 442	Bedroom	41%	40%	1%	0.98	5%	4%	1%	0.8	
Window 443	Living/Dining/Kitchen	23%	23%	0%	1.0	2%	2%	0%	1.0	
Window 444	Bedroom	16%	15%	1%	0.94	2%	1%	1%	0.5	
Window 451	Living/Dining/Kitchen	62%	58%	4%	0.94	21%	18%	3%	0.86	
Window 452	Bedroom	62%	57%	5%	0.92	21%	17%	4%	0.81	
Window 453	Bedroom	62%	57%	5%	0.92	21%	17%	4%	0.81	
Window 454	Living/Dining/Kitchen	62%	59%	3%	0.95	21%	18%	3%	0.86	
Window 455	Living/Dining/Kitchen	53%	52%	1%	0.98	28%	27%	1%	0.96	
Window 456	Living/Dining/Kitchen	55%	54%	1%	0.98	27%	26%	1%	0.96	
Window 457	Living/Dining/Kitchen	72%	71%	1%	0.99	27%	26%	1%	0.96	
Window 458	Bedroom	80%	79%	1%	0.99	28%	27%	1%	0.96	
Window 459	Bedroom	79%	78%	1%	0.99	28%	27%	1%	0.96	
Window 460	Living/Dining/Kitchen	69%	68%	1%	0.99	28%	27%	1%	0.96	
Eighth Floor										
Window 463	Living/Dining/Kitchen	62%	61%	1%	0.98	21%	20%	1%	0.95	
Window 464	Bedroom	62%	61%	1%	0.98	21%	20%	1%	0.95	
Window 465	Bedroom	62%	60%	2%	0.97	21%	19%	2%	0.9	
Window 466	Bedroom	62%	60%	2%	0.97	21%	19%	2%	0.9	
Window 467	Bedroom	62%	59%	3%	0.95	21%	18%	3%	0.86	
Window 468	Living/Dining/Kitchen	78%	76%	2%	0.97	25%	23%	2%	0.92	
Window 469	Living/Dining/Kitchen	77%	76%	1%	0.99	25%	24%	1%	0.96	
Window 470	Bedroom	76%	75%	1%	0.99	25%	24%	1%	0.96	
Window 471	Bedroom	75%	74%	1%	0.99	24%	23%	1%	0.96	
Window 472	Living/Dining/Kitchen	75%	74%	1%	0.99	24%	23%	1%	0.96	
Window 473	Bedroom	41%	41%	0%	1.0	10%	10%	0%	1.0	
Window 474	Living/Dining/Kitchen	64%	63%	1%	0.98	20%	19%	1%	0.95	

Appendix 2 - Sunlight to Windows
Adjacent to East Bay Close, Cardiff CF10 4BA

Reference	Room Use	Sunlight to Windows								Result
		Total Sunlight Hours				Winter Sunlight Hours				
		Before	After	Loss	Ratio	Before	After	Loss	Ratio	
Window 475	Living/Dining/Kitchen	70%	69%	1%	0.99	22%	21%	1%	0.95	
Window 476	Bedroom	69%	68%	1%	0.99	22%	21%	1%	0.95	
Window 477	Living/Dining	54%	53%	1%	0.98	20%	19%	1%	0.95	
Window 478	Bedroom	47%	46%	1%	0.98	19%	18%	1%	0.95	
Window 479	Bedroom	47%	45%	2%	0.96	19%	17%	2%	0.89	
Window 480	Bedroom	55%	54%	1%	0.98	21%	20%	1%	0.95	
Window 481	Bedroom	56%	55%	1%	0.98	19%	18%	1%	0.95	
Window 482	Living/Dining/Kitchen	56%	55%	1%	0.98	18%	17%	1%	0.94	
Window 483	Living/Dining/Kitchen	55%	54%	1%	0.98	16%	15%	1%	0.94	
Window 484	Bedroom	53%	52%	1%	0.98	13%	12%	1%	0.92	
Window 485	Bedroom	50%	49%	1%	0.98	10%	9%	1%	0.9	
Window 486	Living/Dining/Kitchen	29%	29%	0%	1.0	2%	2%	0%	1.0	
Window 487	Bedroom	17%	17%	0%	1.0	2%	2%	0%	1.0	
Window 494	Living/Dining/Kitchen	62%	58%	4%	0.94	21%	18%	3%	0.86	
Window 495	Bedroom	62%	58%	4%	0.94	21%	18%	3%	0.86	
Window 496	Bedroom	62%	57%	5%	0.92	21%	17%	4%	0.81	
Window 497	Living/Dining/Kitchen	62%	59%	3%	0.95	21%	18%	3%	0.86	
Window 498	Living/Dining/Kitchen	83%	82%	1%	0.99	28%	27%	1%	0.96	
Window 499	Living/Dining/Kitchen	83%	82%	1%	0.99	28%	27%	1%	0.96	
Window 500	Living/Dining/Kitchen	82%	81%	1%	0.99	28%	27%	1%	0.96	
Window 501	Bedroom	80%	79%	1%	0.99	28%	27%	1%	0.96	
Window 502	Bedroom	79%	78%	1%	0.99	28%	27%	1%	0.96	
Window 503	Living/Dining/Kitchen	69%	68%	1%	0.99	28%	27%	1%	0.96	
Ninth Floor										
Window 506	Living/Dining/Kitchen	62%	62%	0%	1.0	21%	21%	0%	1.0	
Window 507	Bedroom	62%	62%	0%	1.0	21%	21%	0%	1.0	
Window 508	Bedroom	62%	62%	0%	1.0	21%	21%	0%	1.0	
Window 509	Bedroom	62%	62%	0%	1.0	21%	21%	0%	1.0	
Window 510	Bedroom	62%	62%	0%	1.0	21%	21%	0%	1.0	
Window 511	Living/Dining/Kitchen	79%	78%	1%	0.99	26%	25%	1%	0.96	
Window 512	Living/Dining/Kitchen	78%	77%	1%	0.99	25%	24%	1%	0.96	
Window 513	Bedroom	78%	77%	1%	0.99	25%	24%	1%	0.96	
Window 514	Bedroom	77%	76%	1%	0.99	25%	24%	1%	0.96	
Window 515	Living/Dining/Kitchen	78%	77%	1%	0.99	25%	24%	1%	0.96	
Window 516	Bedroom	42%	42%	0%	1.0	10%	10%	0%	1.0	
Window 517	Living/Dining/Kitchen	71%	70%	1%	0.99	20%	19%	1%	0.95	
Window 518	Living/Dining/Kitchen	76%	75%	1%	0.99	22%	21%	1%	0.95	
Window 519	Bedroom	76%	75%	1%	0.99	22%	21%	1%	0.95	
Window 520	Amiity Area	75%	75%	0%	1.0	22%	22%	0%	1.0	
Window 521	Amiity Area	75%	75%	0%	1.0	22%	22%	0%	1.0	
Window 522	Amiity Area	73%	73%	0%	1.0	20%	20%	0%	1.0	
Window 530	Living/Dining/Kitchen	62%	60%	2%	0.97	21%	19%	2%	0.9	
Window 531	Bedroom	62%	60%	2%	0.97	21%	19%	2%	0.9	

Appendix 2 - Sunlight to Windows
Adjacent to East Bay Close, Cardiff CF10 4BA

Reference	Room Use	Sunlight to Windows								Result
		Total Sunlight Hours				Winter Sunlight Hours				
		Before	After	Loss	Ratio	Before	After	Loss	Ratio	
Window 532	Bedroom	62%	61%	1%	0.98	21%	20%	1%	0.95	
Window 533	Living/Dining/Kitchen	62%	61%	1%	0.98	21%	20%	1%	0.95	
Window 534	Living/Dining/Kitchen	83%	83%	0%	1.0	28%	28%	0%	1.0	
Window 535	Living/Dining/Kitchen	83%	82%	1%	0.99	28%	27%	1%	0.96	
Window 536	Living/Dining/Kitchen	82%	81%	1%	0.99	28%	27%	1%	0.96	
Window 537	Bedroom	80%	79%	1%	0.99	28%	27%	1%	0.96	
Window 538	Bedroom	79%	78%	1%	0.99	28%	27%	1%	0.96	
Window 539	Living/Dining/Kitchen	69%	69%	0%	1.0	28%	28%	0%	1.0	

Appendix 2 - Overshadowing to Gardens and Open Spaces
Adjacent to East Bay Close, Cardiff CF10 4BA

Reference	Total Area		Area receiving at least two hours of sunlight on 21st March										Result
			Before			After			Loss		Ratio		
<u>30 Tyndall Street</u>													
<u>Ground Floor</u>													
Garden 1	64.72	m2	34.31	m2	53%	34.31	m2	53%	0.0	m2	0%	1.0	Pass
Garden 2	28.34	m2	25.31	m2	89%	25.31	m2	89%	0.0	m2	0%	1.0	Pass
<u>31 Tyndall Street</u>													
<u>Ground Floor</u>													
Garden 3	85.95	m2	66.48	m2	77%	66.48	m2	77%	0.0	m2	0%	1.0	Pass
<u>32 Tyndall Street</u>													
<u>Ground Floor</u>													
Garden 4	102.6	m2	70.86	m2	69%	70.86	m2	69%	0.0	m2	0%	1.0	Pass
<u>33 Tyndall Street</u>													
<u>Ground Floor</u>													
Garden 5	59.45	m2	27.42	m2	46%	27.42	m2	46%	0.0	m2	0%	1.0	Pass
<u>34 Tyndall Street</u>													
<u>Ground Floor</u>													
Garden 6	101.62	m2	68.12	m2	67%	68.12	m2	67%	0.0	m2	0%	1.0	Pass
<u>35 Tyndall Street</u>													
<u>Ground Floor</u>													
Garden 7	122.87	m2	87.02	m2	71%	87.02	m2	71%	0.0	m2	0%	1.0	Pass
<u>1 East Bay Close (Neighbour Proposal)</u>													
<u>Ground Floor</u>													
Garden 8	760.21	m2	226.27	m2	30%	189.2	m2	25%	37.07	m2	5%	0.84	Pass
Garden 9	564.45	m2	162.49	m2	29%	44.2	m2	8%	118.28	m2	21%	0.27	Fail
Garden 10	1092.14	m2	883.59	m2	81%	883.59	m2	81%	0.0	m2	0%	1.0	Pass