

City of Cardiff Council's Managing Transportation Impacts (Incorporating Parking Standards) SPD (July 2018) sets out the following standards for purpose built, high density student housing:

Max Car Parking
1 space per 25 beds for operational parking

Cycle Parking
1 per 2 beds

Disabled Parking
1 space per disabled student room + 2 spaces

Set gate further to eastern redline boundary in order to enable refuse / deliveries to site - as shown in Drawings 6764-02 & 03.

Ideally provide a future footway continuation / connection to adjacent site.

Neighbouring Planning Consent
24/00564/NMA

ROSEMARY STREET

Visibility splay of 2.4m x 43m is achievable to nearside kerb which is appropriate for 30-mph speeds.

Potentially provide off site improvements such as dropped kerb tactile paving across existing Rosemary Street accesses further to the west.

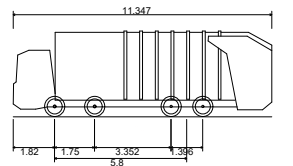
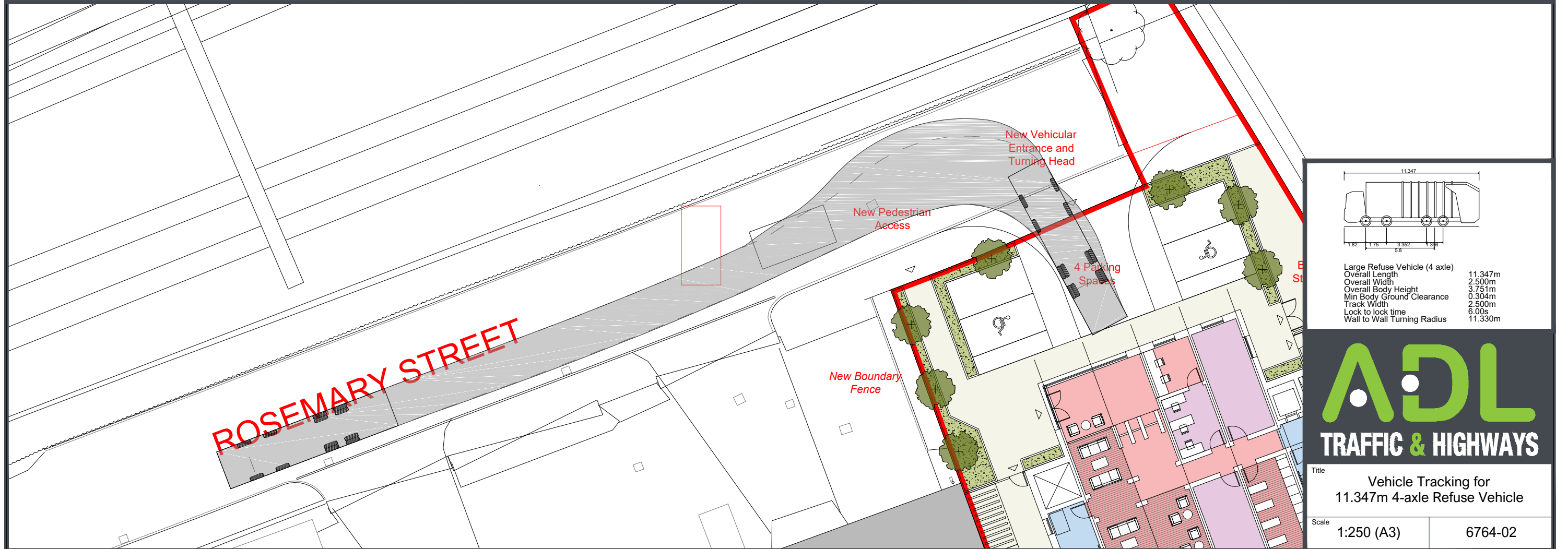
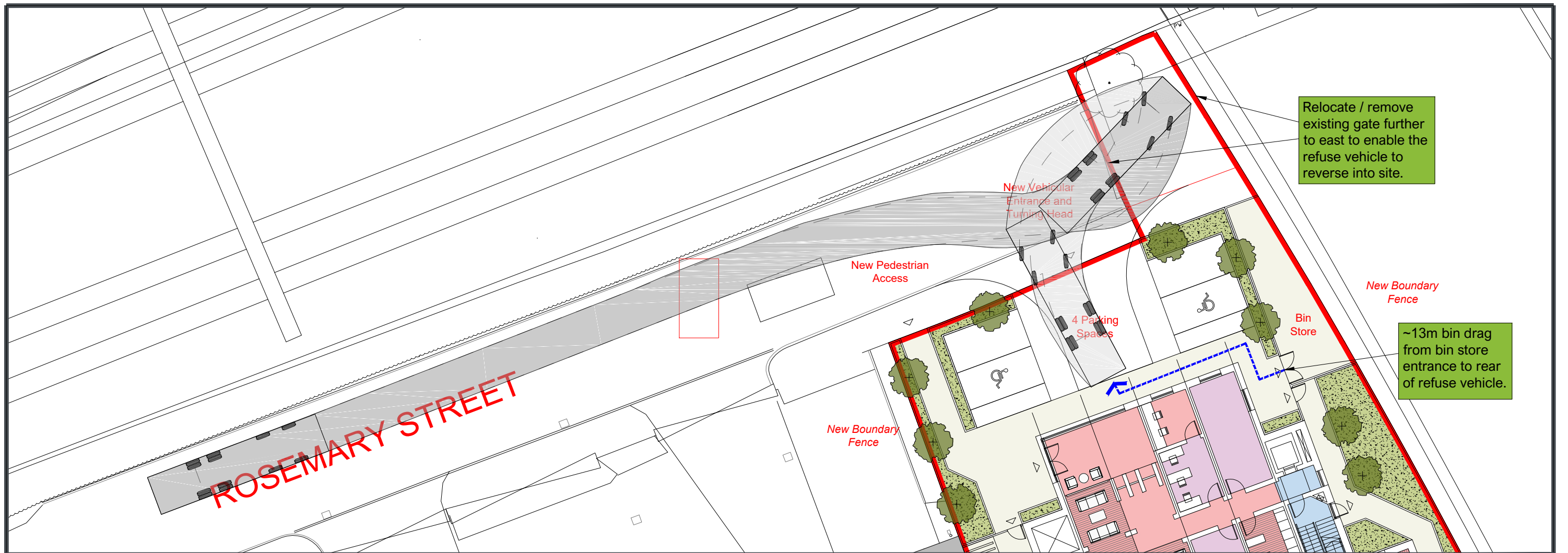
Total of 140 bicycle parking spaces provided. Ideally, we provide 148 bicycle parking spaces to meet standard and provide in a mix of sheffield stands and two tier stands.

WNO Warehouse

Assumed continuation of footway southwards linking with shared footway / cycleway on East Bay Close.

ADL
TRAFFIC & HIGHWAYS

Title	East Bay Close Site Review	
Scale	1:500 (A3)	6764-01



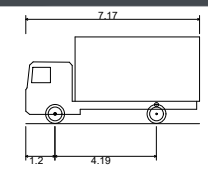
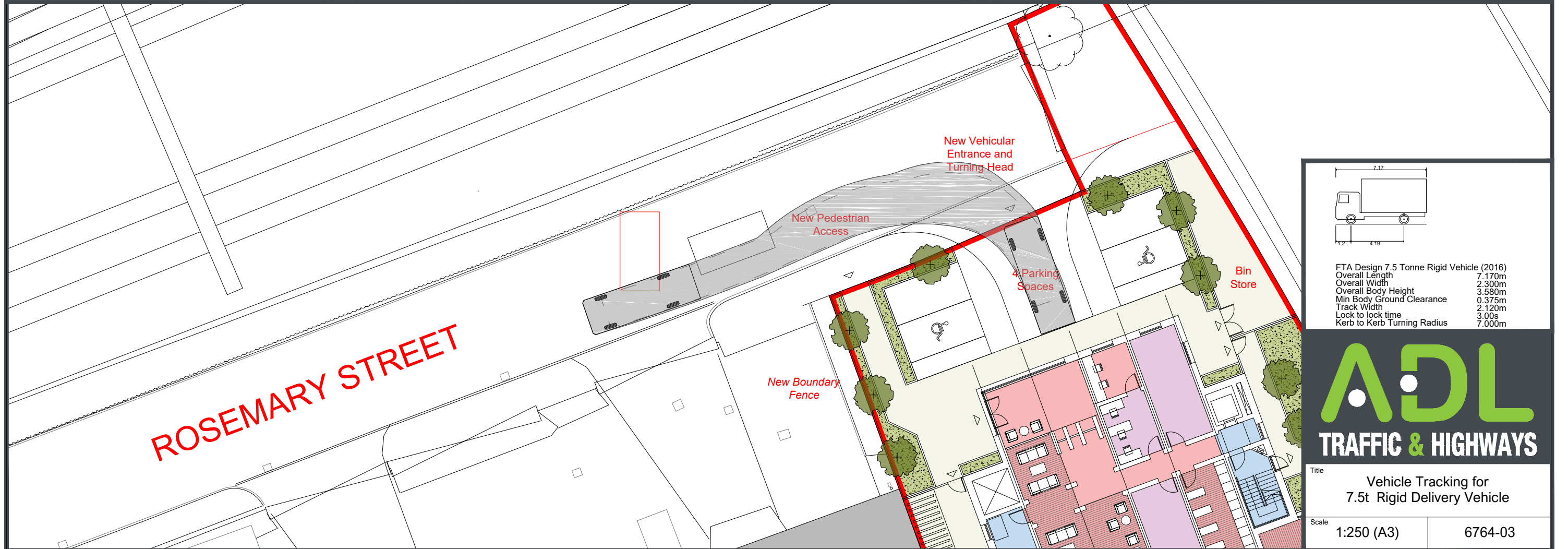
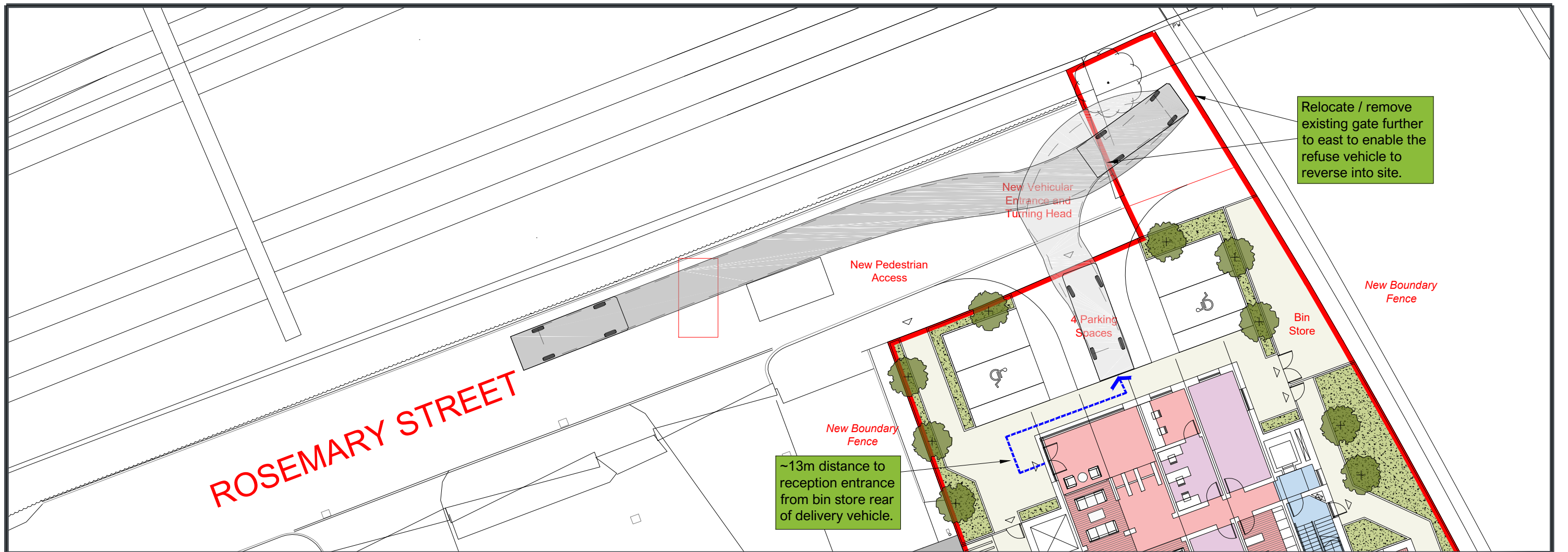
Large Refuse Vehicle (4 axle)	
Overall Length	11.347m
Overall Width	2.500m
Overall Body Height	3.751m
Min Body Ground Clearance	0.304m
Track Width	2.500m
Lock to lock time	6.00s
Wall to Wall Turning Radius	11.330m

ADL
TRAFFIC & HIGHWAYS

Title
Vehicle Tracking for
11.347m 4-axle Refuse Vehicle

Scale
1:250 (A3)

6764-02



FTA Design 7.5 Tonne Rigid Vehicle (2016)	
Overall Length	7.170m
Overall Width	2.300m
Overall Body Height	3.580m
Min Body Ground Clearance	0.375m
Track Width	2.120m
Lock to lock time	3.00s
Kerb to Kerb Turning Radius	7.000m

ADL
TRAFFIC & HIGHWAYS

Title Vehicle Tracking for 7.5t Rigid Delivery Vehicle	
Scale 1:250 (A3)	6764-03